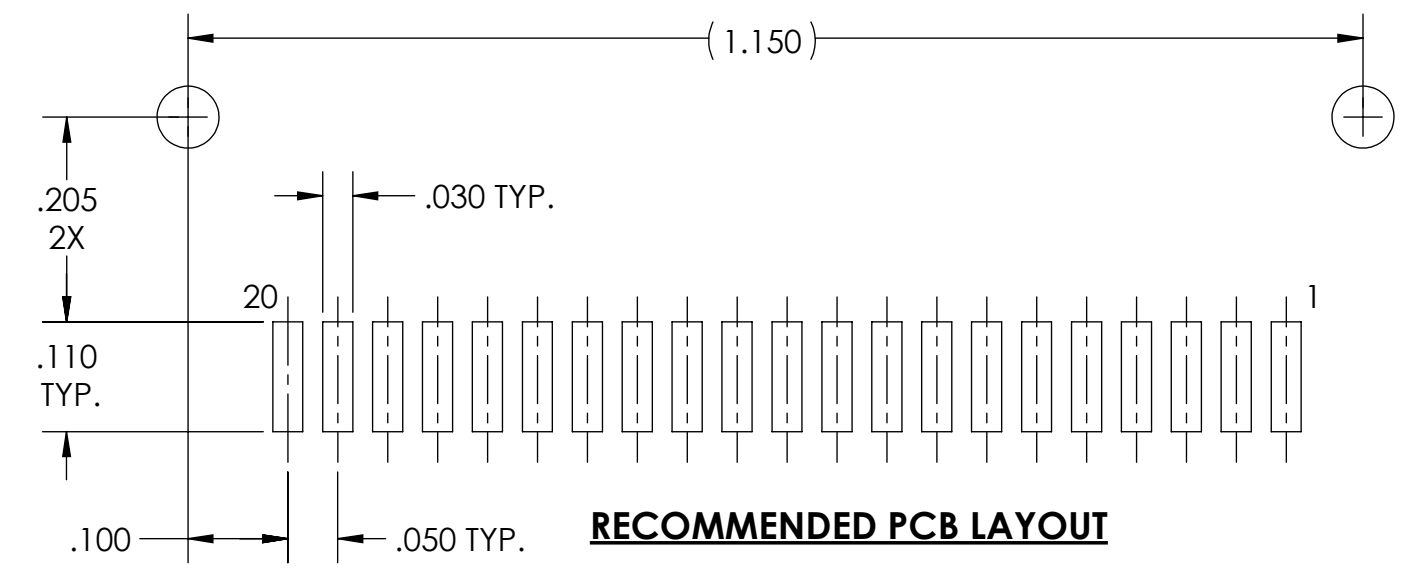
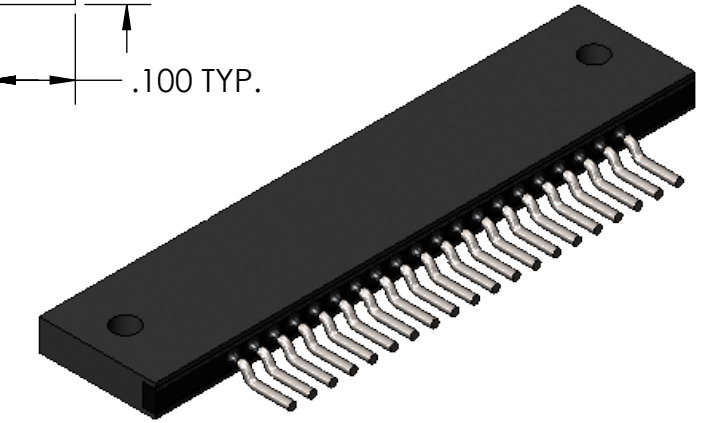
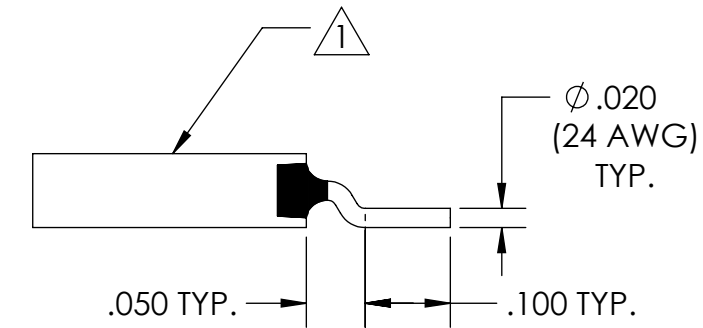
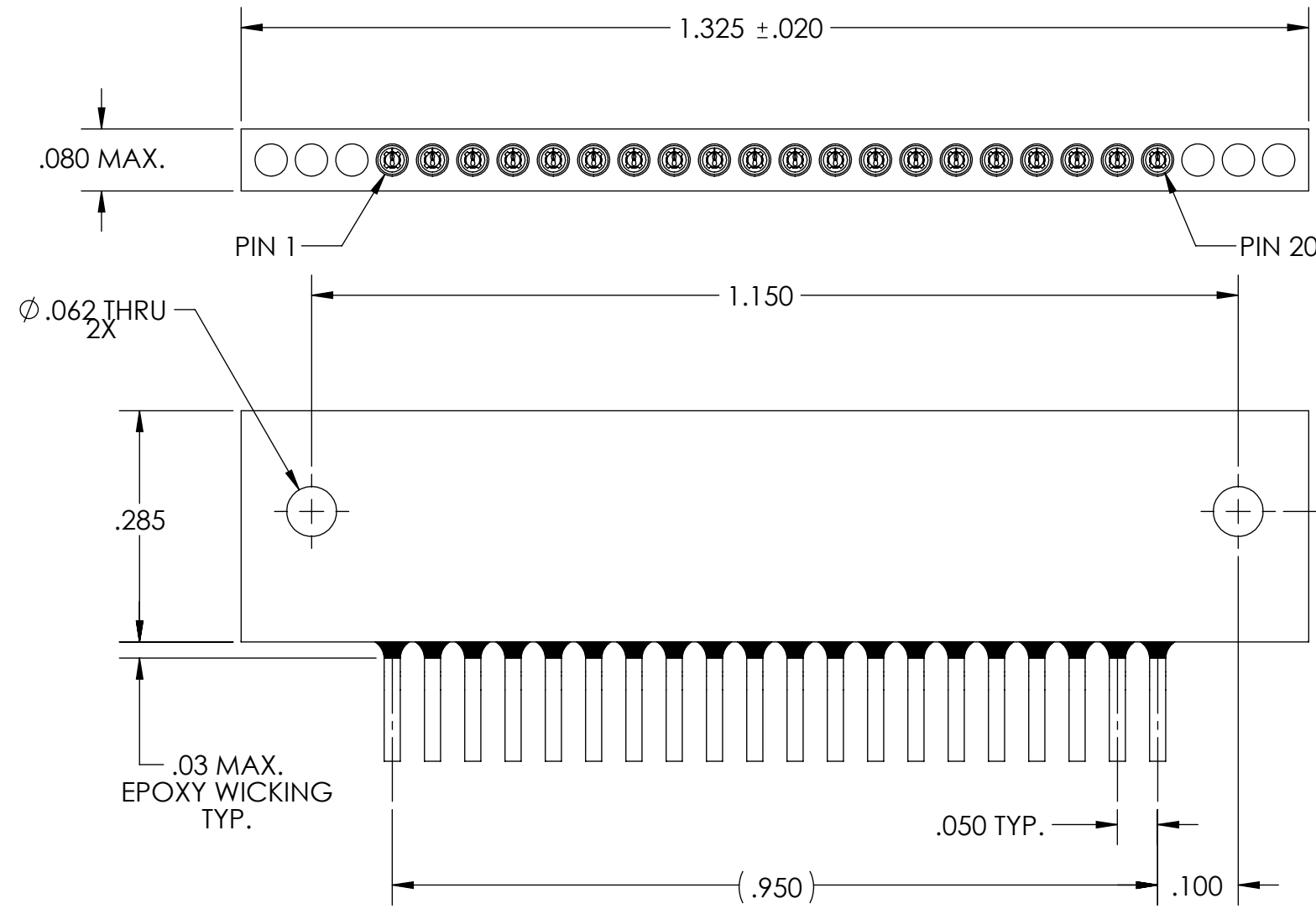


PART REV	DWG ISSUE	DATE	ECN NO.	APPVD BY	REL BY
-	-	8/4/17	UMI6463	DW	DW
A	A	8/4/17	UMI6475	DW	DW

F  
E  
D  
C  
B  
A

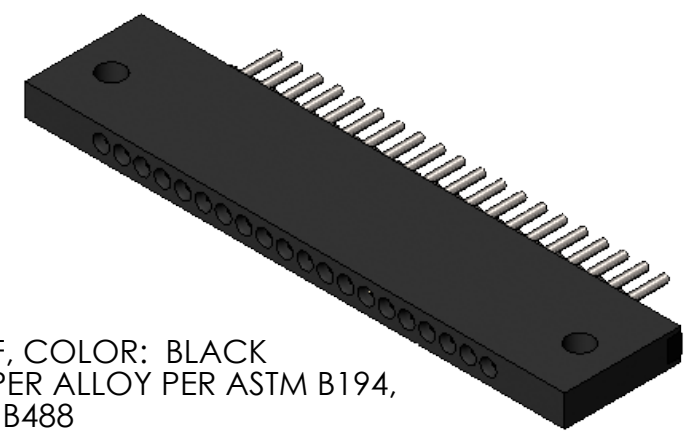


3. PERFORMANCE SPECIFICATIONS:  
CURRENT RATING: 3 AMPS MAX.  
DWV: 600 VAC  
TEMPERATURE RATING: 125° C

2 MATERIALS:  
INSULATOR: PPS PER MIL-M-24519 GST-40F, COLOR: BLACK  
PIN CONTACTS: C17200 BERYLLIUM COPPER ALLOY PER ASTM B194,  
GOLD PLATED PER ASTM B488  
24 AWG LEADS: TIN PLATED COPPER ALLOY PER A-A-59551, TYPE S

1 MARKING: "UMI", DATE CODE, UMI PART NUMBER, UMI WORK ORDER NUMBER

NOTES: UNLESS OTHERWISE SPECIFIED.



QUALITY SYMBOLS CRITICAL C MAJOR NO SYMBOLS = MINOR DIMENSIONS	UNLESS OTHERWISE SPECIFIED: ALL DIMENSIONS ARE IN INCHES	SCALE NONE	DWG SIZE B	THIRD ANGLE PROJECTION	REVISE ON CAD ONLY
	GENERAL TOLERANCES:  3 PLACES ±.005 2 PLACES ±.01 ANGULAR ±2°	DRAWN BY & DATE DU 8/4/17	TITLE: MICRO STRIP CONNECTOR, "SR" SERIES, SR20P4-L05, SMT LEADS, MTN. HOLES		
	ULTI-MATE CAGE CODE 58967	CHECKED BY & DATE DW 8/4/17	MATERIAL: 2	ENG PROJECT #: -	
		APPROVED BY & DATE DW 8/4/17	PART NO. 837201024	DRAWING NO. SD-837201024	
		CAD FILE NAME SD-837201024.SLDDRW	THIS DRAWING CONTAINS INFORMATION THAT IS PROPRIETARY TO ULTI-MATE INCORPORATED AND SHOULD NOT BE USED WITHOUT WRITTEN PERMISSION.		