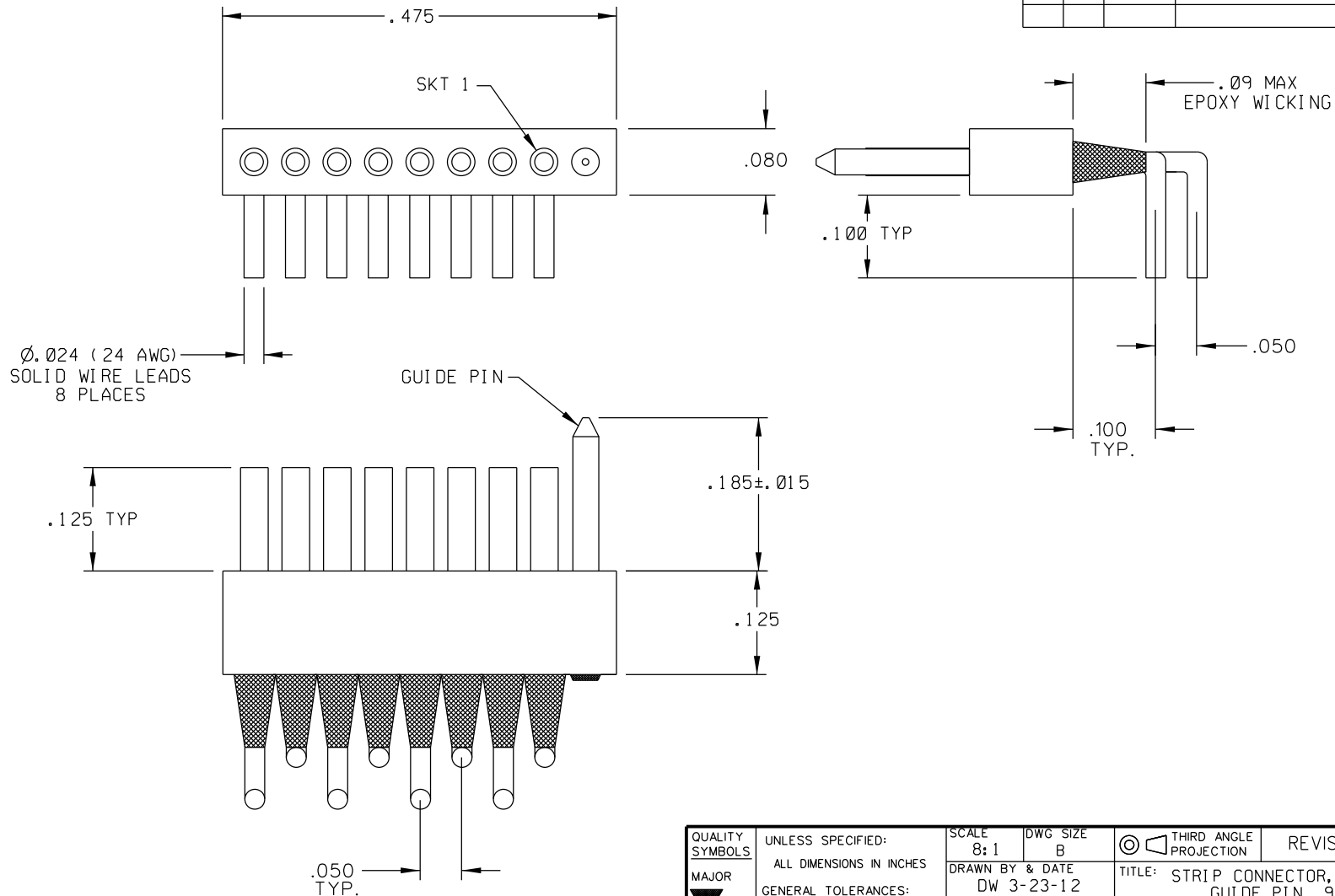


SD-837082081

PART REV	DWG ISSUE	DATE	ECN NO.	APPVD BY	REL BY
-	-	3-23-12	UMI 4590		



2 MATERIALS:
 INSULATOR: PPS PER MIL-M-24519 GST-40F
 SOCKET CONTACTS: CDA 210 BRASS ALLOY, GOLD PLATED PER ASTM B488
 24 AWG LEADS: TIN PLATED COPPER ALLOY PER A-A-59551 TYPE S
 GUIDE PIN: PASSIVATED STAINLESS STEEL

1. MARKING: NONE.

NOTES: UNLESS OTHERWISE SPECIFIED.

QUALITY SYMBOLS	UNLESS SPECIFIED: ALL DIMENSIONS IN INCHES	SCALE 8:1	DWG SIZE B	THIRD ANGLE PROJECTION	REVISE ON CAD ONLY
MAJOR	GENERAL TOLERANCES: 3 PLACE ± .005 2 PLACE ± .01 ANGULAR ± 2°	DRAWN BY & DATE DW 3-23-12	CHECKED BY & DATE	TITLE: STRIP CONNECTOR, FEMALE, SIZE 8, GUIDE PIN, 90° L01 LEADS SR08S1-L01	
CRITICAL	Uti-Mate CAGE CODE 58967	APPROVED BY & DATE	CAD FILENAME SD-837082081.DGN	PART NO. 837082081	DRAWING NO. SD-837082081
SPC					SHEET NO. 1 OF 1
S					REV -