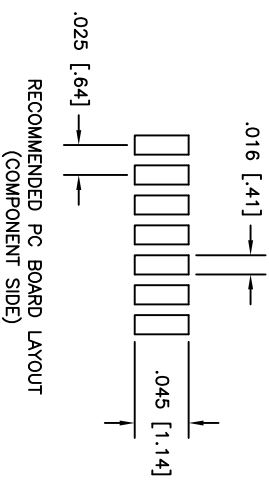
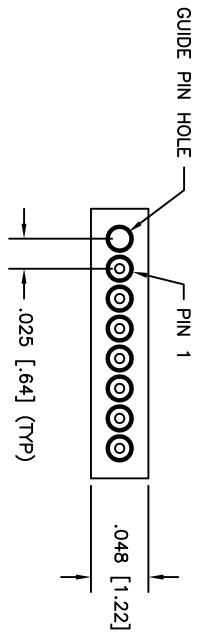
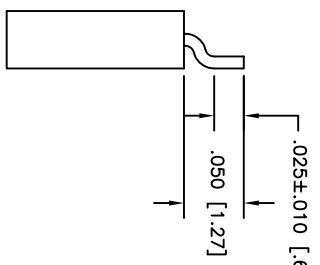
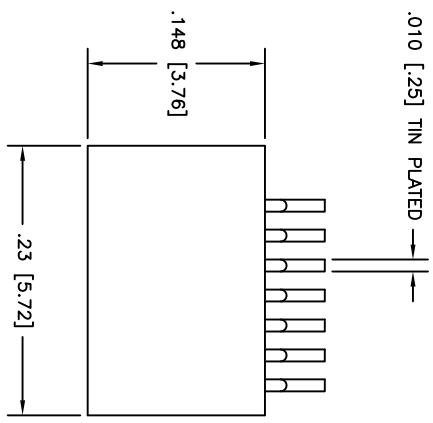


| PART DWG | DATE | ECN NO. | APPD BY | REL BY |
|----------|----------|---------|-----------|--------|
| REV | ISSUE | | | |
| - | 10-09-17 | UM6523 | T-POMBART | PER |



3. PERFORMANCE: CONTACT RATING: 1 AMPERE MAXIMUM
 INSULATION RESISTANCE: 5000 MEGOHMS MINIMUM @ 100 VDC
 CONTACT RESISTANCE: 0.021 VOLT MAXIMUM DROP @ 1.0 AMPS (.021 OHMS)
2. MATERIALS: INSULATOR: PPS (POLYPHENYLENE SULFIDE) GST-40F
 CONTACTS: BERYLLIUM COPPER PER ASTM B194, GOLD PLATED PER ASTM B488
 LEADS: TIN PLATED
1. MARKINGS: UMI, DATE CODE, W/O AND UMI P/N ON BAG OR TAG
- NOTES: UNLESS OTHERWISE SPECIFIED

| | | | | | |
|-----------------|--|--|-------------------|---|-----------------------|
| QUALITY SYMBOLS | UNLESS SPECIFIED, ALL DIMENSIONS IN INCHES | SCALE | DWG SIZE | THIRD ANGLE PROJECTION | REVISE ON CAD ONLY |
| MAJOR = | GENERAL TOLERANCES: | 10:1 | B | | |
| CRITICAL = | 3 PLACE ±.005 | DRAWN BY & DATE | PER | TITLE | NANO STRIP CONNECTOR, |
| | 2 PLACE ±.010 | 09-19-17 | CHECKED BY & DATE | MALE (PLUG), SIZE 07, L05, NSR-07P1-L05 | |
| | ANGULAR ±2° | SEE ECN | SEE ECN | MATERIAL | |
| SPC | Uti+ - Mate | CAD FILENAME | PART NO. | DRAWING NO. | Uti+ - Mate |
| S | 58967 | SD-837075021.DWG | 837075021 | SD-837075021 | Connector Inc. |
| | | THIS DRAWING CONTAINS INFORMATION THAT IS PROPRIETARY TO UTI+MATE INCORPORATED AND SHOULD NOT BE USED WITHOUT WRITTEN PERMISSION | | | |
| | | | | SHEET NO. | 1 OF 1 |
| | | | | PART REV | - |