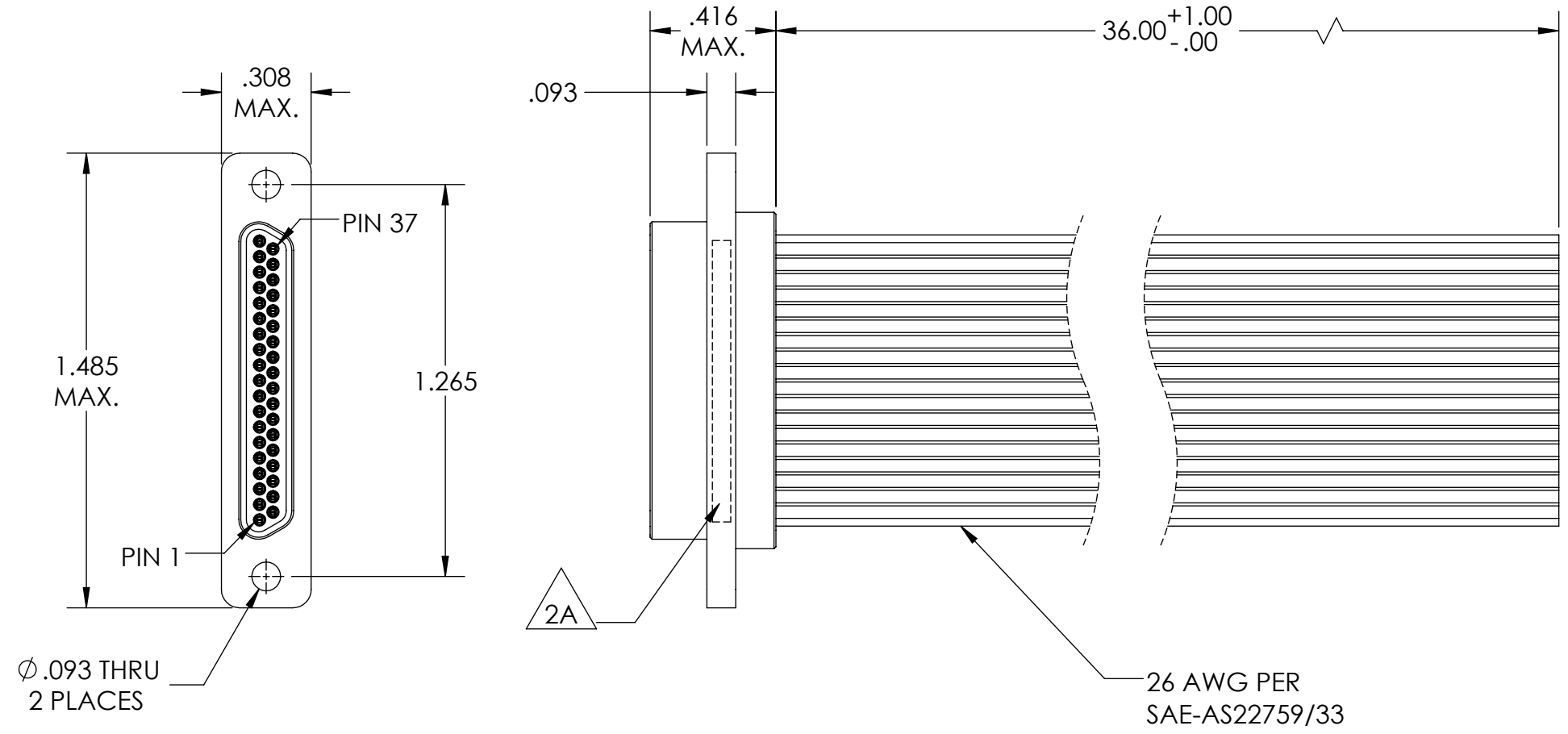
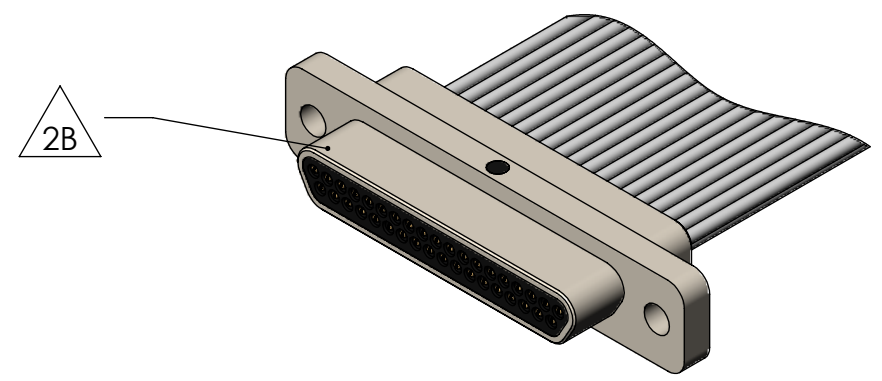


PART REV	DWG ISSUE	DATE	ECN NO.	APPVD BY	REL BY
-	-	07/27/17	UMI6453	DW	DW

F
E
D
C
B
A



1	WHT	20	WHT
2	WHT	21	WHT
3	WHT	22	WHT
4	WHT	23	WHT
5	WHT	24	WHT
6	WHT	25	WHT
7	WHT	26	WHT
8	WHT	27	WHT
9	WHT	28	WHT
10	WHT	29	WHT
11	WHT	30	WHT
12	WHT	31	WHT
13	WHT	32	WHT
14	WHT	33	WHT
15	WHT	34	WHT
16	WHT	35	WHT
17	WHT	36	WHT
18	WHT	37	WHT
19	WHT		



4. PERFORMANCE SPECIFICATIONS:
 CURRENT RATING: 3 AMPS MAX.
 INSULATION RESISTANCE: 5000 MEGOHMS MIN.
 DWV: 600 VAC
 TEMPERATURE RATING: 125° C

3 MATERIALS:
 SHELL: 6061-T6 ALUMINUM PER AMS-QQ-A200/8, NICKEL PLATED PER AMS-2404
 INSULATOR: PPS PER MIL-M-24519 GST-40F, COLOR: BLACK
 PIN CONTACTS: C17200 BERYLLIUM COPPER PER ASTM B194, GOLD PLATED PER ASTM B488
 WIRE: 26 AWG PER SAE-AS22759/11-26-9

2. MARKING:
 2A "UMI", DATE CODE, M83513/03-F10N, AND WORK ORDER NUMBER
 2B A DOT INDICATING POSITION 1

1. CONNECTOR ASSEMBLY IS IAW MIL-DTL-83513 UNLESS OTHERWISE SPECIFIED.
NOTES: UNLESS OTHERWISE SPECIFIED.

QUALITY SYMBOLS CRITICAL C MAJOR NO SYMBOLS = MINOR DIMENSIONS	UNLESS OTHERWISE SPECIFIED; ALL DIMENSIONS ARE IN INCHES	SCALE NONE	DWG SIZE B	THIRD ANGLE PROJECTION	REVISE ON CAD ONLY	
	GENERAL TOLERANCES: 3 PLACES ±.005 2 PLACES ±.01 ANGULAR ±2°	DRAWN BY & DATE DR 07/27/17	TITLE: MICRO-D CONNECTOR ASSEMBLY, MIL-DTL-83513/03-F10N, MR37P0-26Y1-36.00-S01, NICKEL PLT SHELL			
	ULTI-MATE CAGE CODE 58967	CHECKED BY & DATE SEE ECN	MATERIAL: 3	ENG PROJECT #: -		
		APPROVED BY & DATE SEE ECN	CAD FILE NAME SD-835161100.SLDDRW	PART NO. 835161100	DRAWING NO. SD-835161100	SHEET NO. 1 of 1
THIS DRAWING CONTAINS INFORMATION THAT IS PROPRIETARY TO ULTI-MATE INCORPORATED AND SHOULD NOT BE USED WITHOUT WRITTEN PERMISSION.						PART REV. -