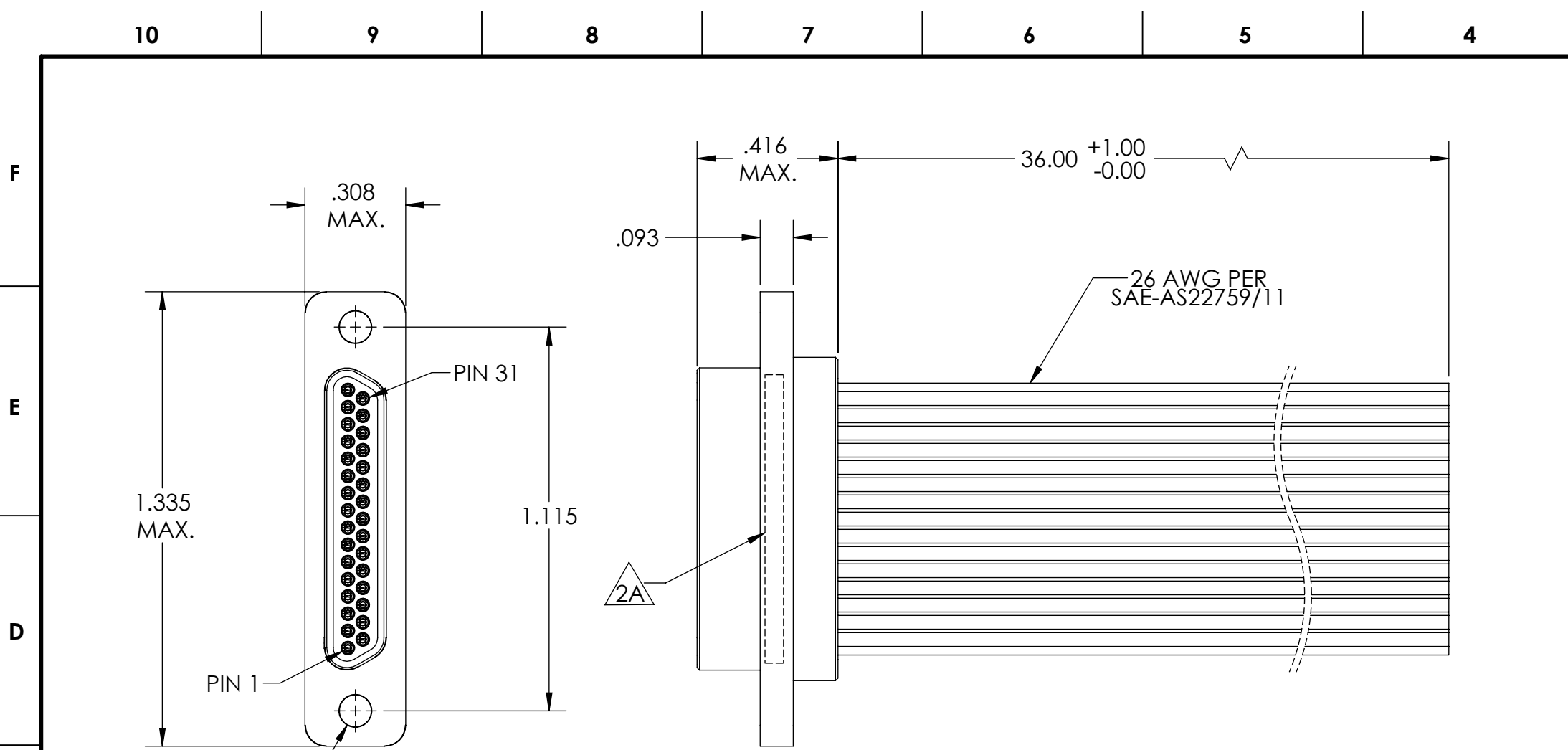
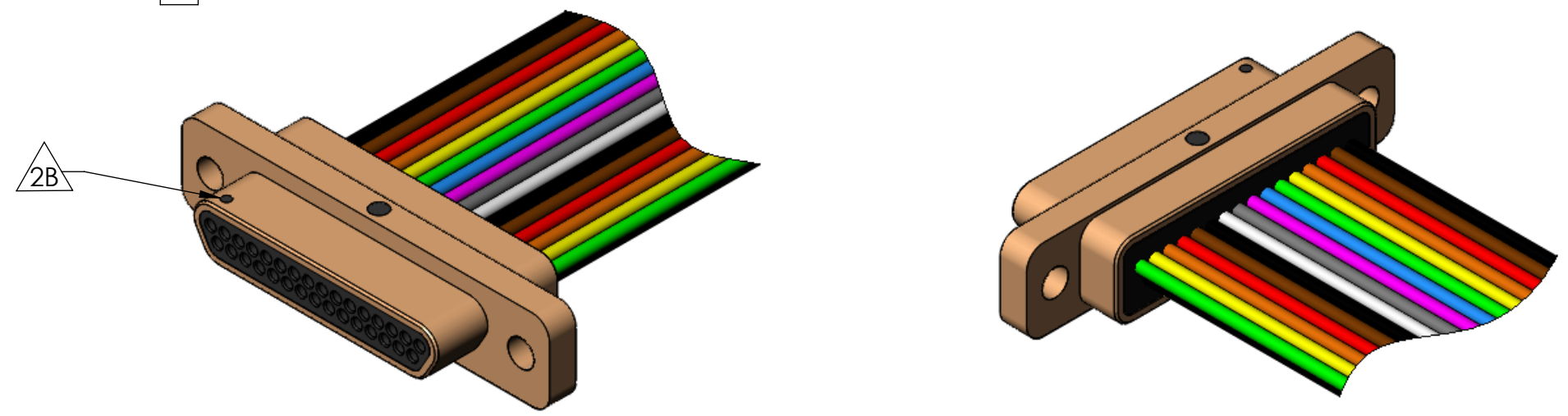


PART REV	DWG ISSUE	DATE	ECN NO.	APPVD BY	REL BY
-	-	6/27/17	UMI6415	DW	DW



1	BLK	16	GRN
2	BRN	17	BLU
3	RED	18	VIO
4	ORG	19	GRY
5	YEL	20	WHT
6	GRN	21	BLK
7	BLU	22	BRN
8	VIO	23	RED
9	GRY	24	ORG
10	WHT	25	YEL
11	BLK	26	GRN
12	BRN	27	BLU
13	RED	28	VIO
14	ORG	29	GRY
15	YEL	30	WHT
		31	BLK



4. PERFORMANCE SPECIFICATIONS:
 CURRENT RATING: 3 AMPS MAX.
 INSULATION RESISTANCE: 5000 MEGOHMS MIN.
 DWV: 600 VAC
 TEMPERATURE RATING: 125° C

3 MATERIALS:
 SHELL: 6061-T6 ALUMINUM PER AMS-QQ-A200/8, CADMIUM PLATED PER AMS-QQ-P-416
 INSULATOR: PPS PER MIL-M-24519 GST-40F, COLOR: BLACK
 PIN CONTACTS: C17200 BERYLLIUM COPPER PER ASTM B194, GOLD PLATED PER ASTM B488
 WIRE: 26 AWG PER SAE-AS27759/11-26, COLOR CODE: REPEATING 10 COLERS PER MIL-STD-681

2. MARKING:
 2A "UMI", DATE CODE, M83513/03-E04C, UMI WORK ORDER NUMBER
 2B A DOT INDICATING POSITION 1

1. CONNECTOR ASSEMBLY IS IAW MIL-DTL-83513 UNLESS OTHERWISE SPECIFIED.
NOTES: UNLESS OTHERWISE SPECIFIED.

QUALITY SYMBOLS CRITICAL C MAJOR NO SYMBOLS = MINOR DIMENSIONS	UNLESS OTHERWISE SPECIFIED: ALL DIMENSIONS ARE IN INCHES	SCALE: NONE	DWG SIZE: B	THIRD ANGLE PROJECTION	REVISE ON CAD ONLY	
	GENERAL TOLERANCES: 3 PLACES ±.005 2 PLACES ±.01 ANGULAR ±2° ULTI-MATE CAGE CODE 58967	DRAWN BY & DATE: DU 6/27/17	TITLE: MICRO-D CONNECTOR ASSEMBLY, MIL-DTL-83513/03-E04C, MR31P0-26M6-36.00, CADMIUM PLT SHELL			ENG PROJECT #: NONE
		CHECKED BY & DATE: DW 6/27/17	MATERIAL: 3	PART NO.: 835150040	DRAWING NO.: SD-835150040	
		APPROVED BY & DATE: DW 6/27/17	CAD FILE NAME: SD-835150040.SLDDRW	THIS DRAWING CONTAINS INFORMATION THAT IS PROPRIETARY TO ULTI-MATE INCORPORATED AND SHOULD NOT BE USED WITHOUT WRITTEN PERMISSION.		