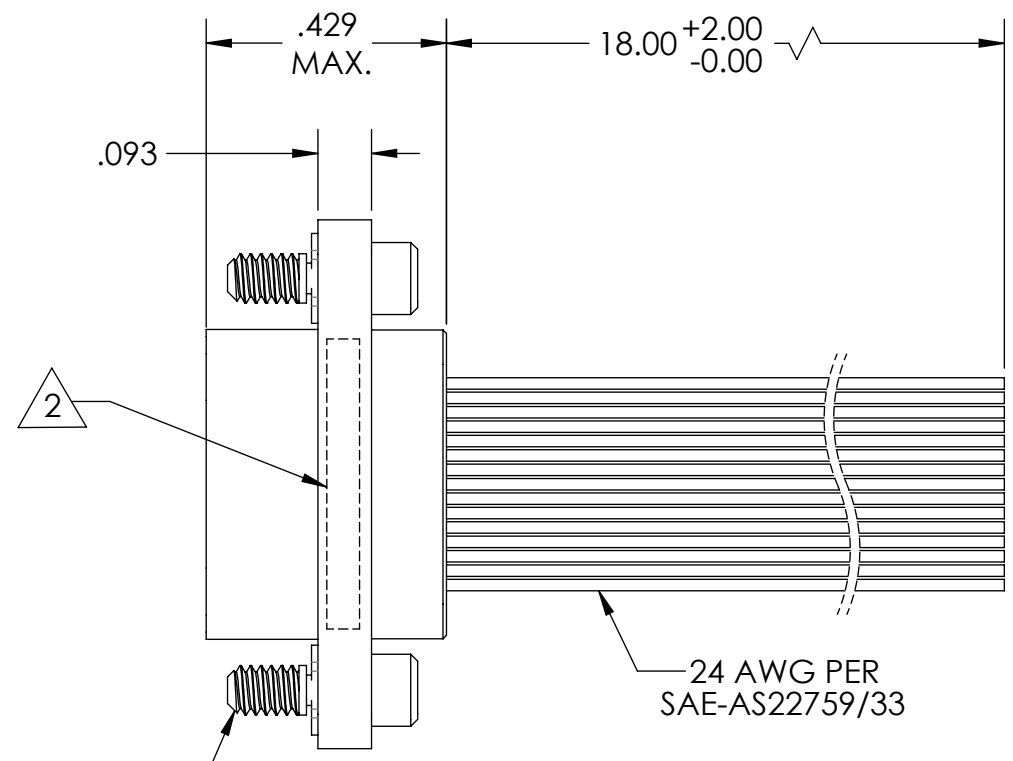
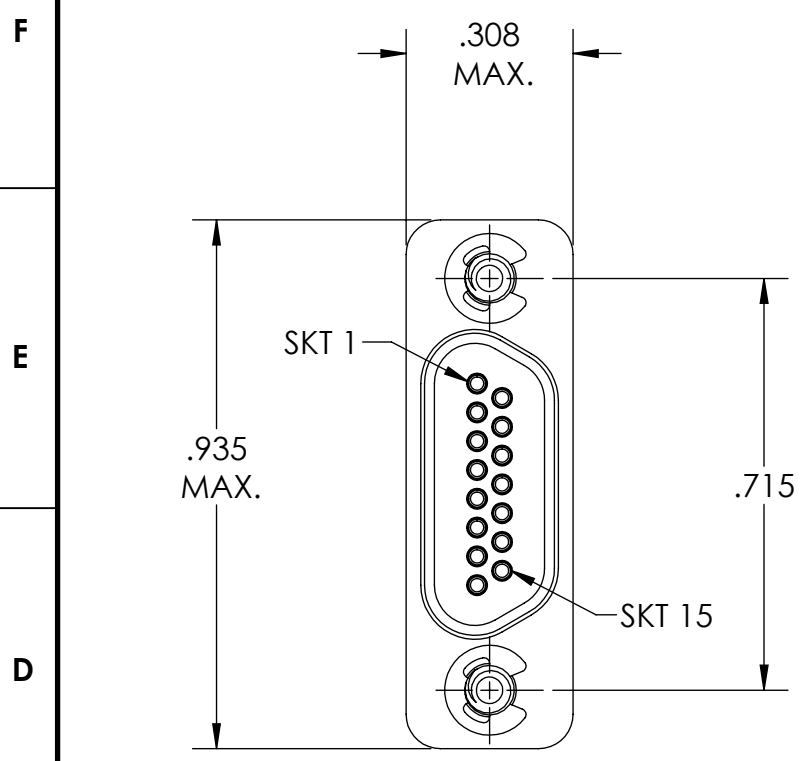
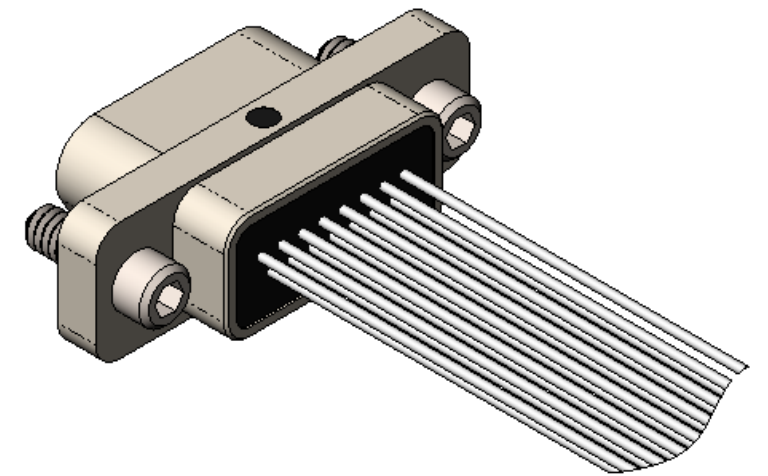
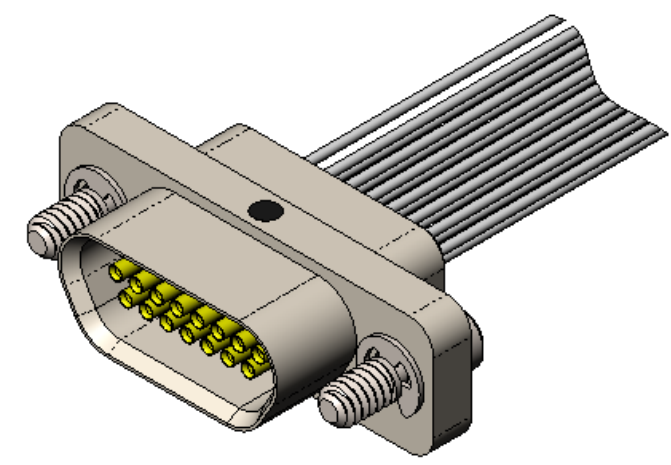


PART REV	DWG ISSUE	DATE	ECN NO.	APPVD BY	REL BY
-	-	6/3/15	UMI5630	DW	DW



1	WHT
2	WHT
3	WHT
4	WHT
5	WHT
6	WHT
7	WHT
8	WHT
9	WHT
10	WHT
11	WHT
12	WHT
13	WHT
14	WHT
15	WHT

2-56 JACKSCREW
LOW-PROFILE
ALLEN HEAD
2X



4. PERFORMANCE SPECIFICATIONS:
CURRENT RATING: 3 AMPS MAX.
INSULATION RESISTANCE: 5000 MEGOHMS MIN.
DWV: 600 VAC
TEMPERATURE RATING: 125° C

3 MATERIALS:
SHELL: 6061-T6 ALUMINUM PER AMS-QQ-A200/8, NICKEL PLATED PER AMS-2404
INSULATOR: PPS PER MIL-M-24519 GST-40F, COLOR: BLACK
SOCKET CONTACT: C21000 COPPER ALLOY PER ASTM B36, GOLD PLATED PER ASTM B488
WIRE: 24 AWG PER SAE-AS22759/33-24, ALL WHITE
HARDWARE: PASSIVATED STAINLESS STEEL IAW MIL-DTL-83513/5
INTERFACIAL SEAL: FLUOROSILICONE PER MIL-R-25988

2 MARKING: "UMI", DATE CODE, UMI PART NUMBER
1. CONNECTOR ASSEMBLY IS IAW MIL-DTL-83513 UNLESS OTHERWISE SPECIFIED.

NOTES: UNLESS OTHERWISE SPECIFIED.

QUALITY SYMBOLS CRITICAL MAJOR NO SYMBOLS = MINOR DIMENSIONS	UNLESS OTHERWISE SPECIFIED: ALL DIMENSIONS ARE IN INCHES	SCALE 3 : 1	DWG SIZE B	THIRD ANGLE PROJECTION	REVISE ON CAD ONLY		
	GENERAL TOLERANCES: 3 PLACES ±.005 2 PLACES ±.01 ANGULAR ±2°	DRAWN BY & DATE DU 6/3/15	TITLE: MICRO-D CONNECTOR ASSEMBLY, MR15S02-24Y1-18.0-S01			MATERIAL: 3	ENG PROJECT #: NONE
	ULTI-MATE CAGE CODE 58967	CHECKED BY & DATE DW 6/3/15	MATERIAL: 3				
		APPROVED BY & DATE DW 6/3/15	CAD FILE NAME SD-834221862.SLDDRW	PART NO. 834221862	DRAWING NO. SD-834221862	SHEET NO. 1 of 1	
THIS DRAWING CONTAINS INFORMATION THAT IS PROPRIETARY TO ULTI-MATE INCORPORATED AND SHOULD NOT BE USED WITHOUT WRITTEN PERMISSION.							

