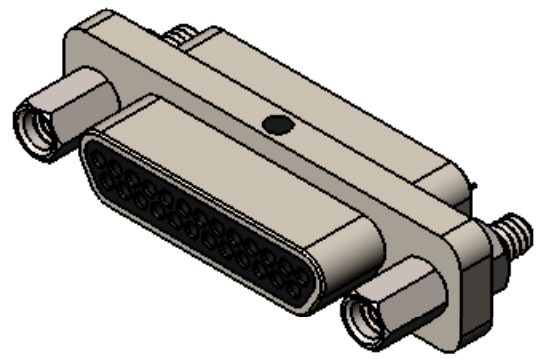
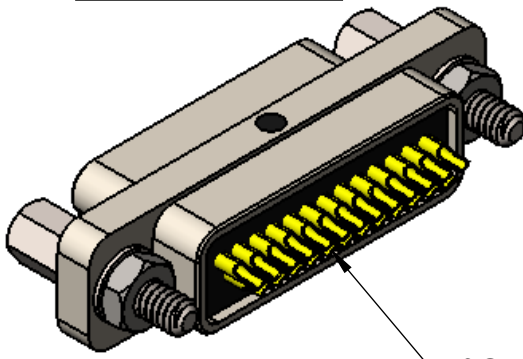


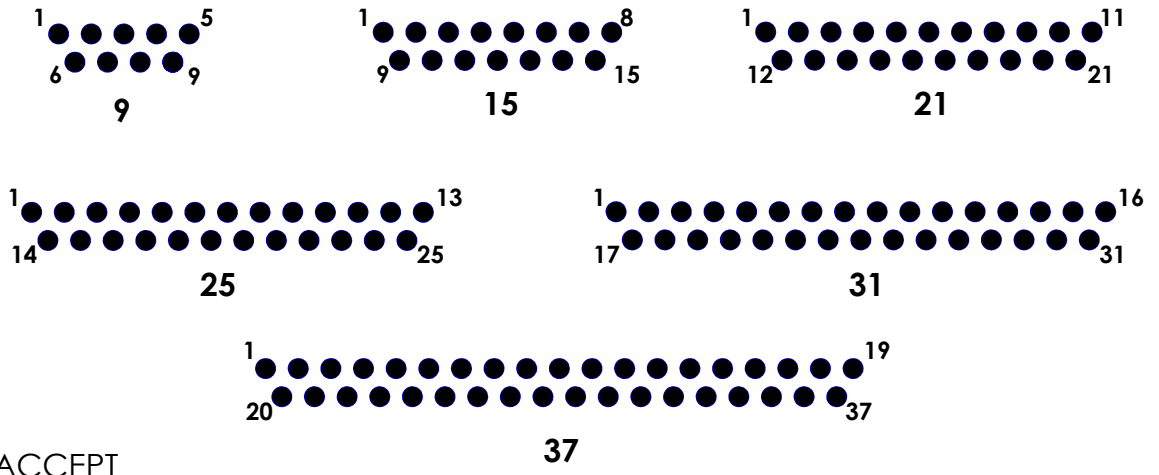
PART REV	DWG ISSUE	DATE	ECN NO.	APPVD BY	REL BY
-	-	10/13/16	UMI6116	DW	DW



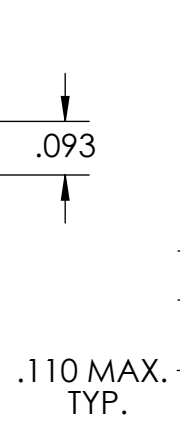
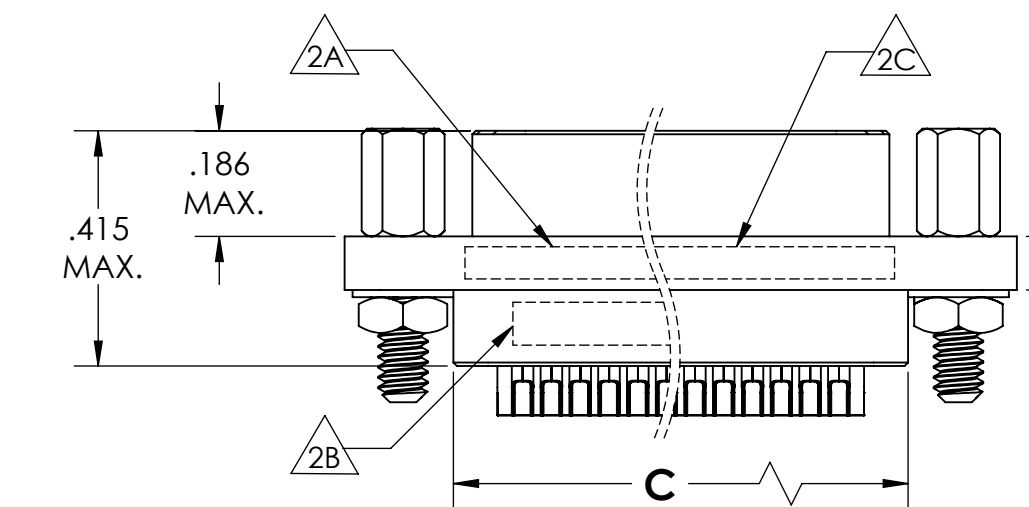
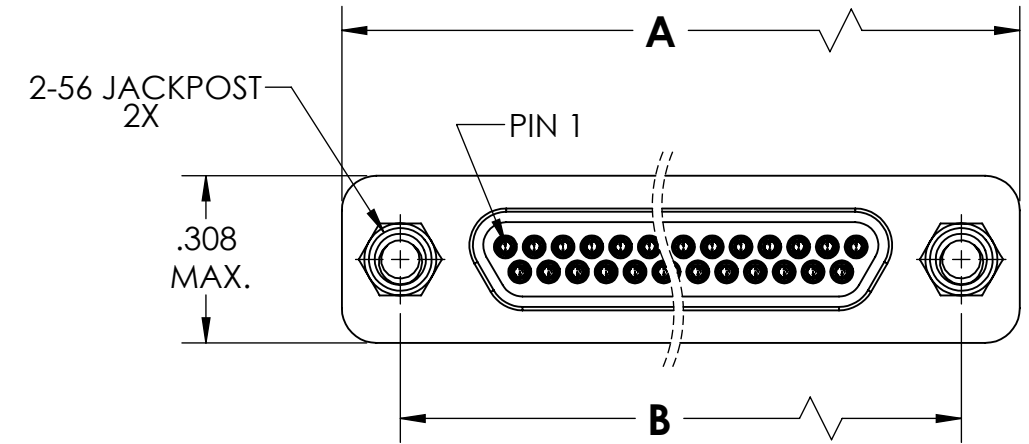
SIZE 25 SHOWN



SOLDER CUPS ACCEPT UP TO 24 AWG WIRE



PART NUMBER	SIZE	A MAX.	B	C MAX.
834111007	9	.785	.565	.400
834121007	15	.935	.715	.550
834131007	21	1.085	.865	.700
834141007	25	1.185	.965	.800
834151007	31	1.335	1.115	.950
834161007	37	1.485	1.265	1.100



SOLDER CUPS ARE ORIENTATED AS SHOWN

4. PERFORMANCE SPECIFICATIONS:
 CURRENT RATING: 3 AMPS MAX.
 DWV: 600 VAC
 TEMPERATURE RATING: 125° C

3 MATERIALS:
 SHELL: 6061-T6 ALUMINUM PER AMS-QQ-A200/8, NICKEL PLATED PER AMS 2404
 INSULATOR: PPS PER MIL-M-24519 GST-40F, COLOR: BLACK
 PIN CONTACTS: C17200 BERYLLIUM COPPER ALLOY PER ASTM B194, GOLD PLATED PER ASTM B488
 HARDWARE: PASSIVATED STAINLESS STEEL IAW MIL-DTL-83513/5

2. MARKING:
 FOR SIZES 9 & 15: $\triangle 2A$ "UMI", DATE CODE, UMI PART NUMBER
 $\triangle 2B$ UMI WORK ORDER NUMBER
 FOR SIZES 21 THRU 37: $\triangle 2C$ "UMI", DATE CODE, UMI PART NUMBER, UMI WORK ORDER NUMBER

1. CONNECTOR ASSEMBLY IS IAW MIL-DTL-83513 UNLESS OTHERWISE SPECIFIED.

NOTES: UNLESS OTHERWISE SPECIFIED.

QUALITY SYMBOLS CRITICAL $\triangle C$ MAJOR \blacktriangledown NO SYMBOLS = MINOR DIMENSIONS	UNLESS OTHERWISE SPECIFIED: ALL DIMENSIONS ARE IN INCHES	SCALE 3:1	DWG SIZE B	THIRD ANGLE PROJECTION	REVISE ON CAD ONLY		
	GENERAL TOLERANCES: 3 PLACES $\pm .005$ 2 PLACES $\pm .01$ ANGULAR $\pm 2^\circ$	DRAWN BY & DATE DU 10/13/16		TITLE: MICRO-D SOLDER CUP CONNECTORS, PLUG, SIZES 9 THRU 37, 2-56 JACKPOSTS, SOLDER CUPS ACCEPTS 24 AWG WIRE			
		CHECKED BY & DATE DW 10/13/16		MATERIAL: $\triangle 3$	ENG PROJECT #:	NONE	
		APPROVED BY & DATE DW 10/13/16		PART NO. SEE TABLE I	DRAWING NO. SD-834111007	SHEET NO. 1 of 1	
	ULTI-MATE CAGE CODE 58967	CAD FILE NAME SD-834111007.SLDDRW	THIS DRAWING CONTAINS INFORMATION THAT IS PROPRIETARY TO ULTI-MATE INCORPORATED AND SHOULD NOT BE USED WITHOUT WRITTEN PERMISSION.		PART REV. -		

