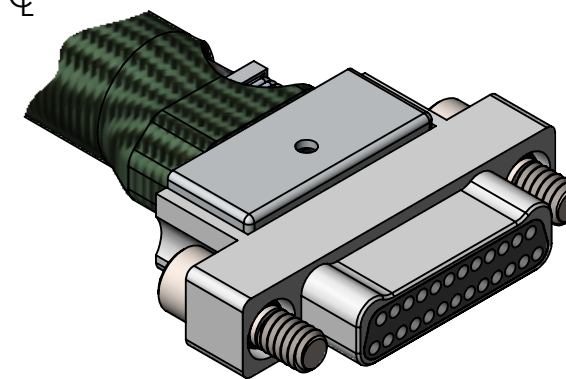


## REVISIONS

PART REV.	DWG. ISSUE	DATE	ECN NO.	APPVD. BY	REL. BY
A	A	05/31/2022	UMI8037	PA	DW
B	B	07/08/2022	UMI8067	PA	DW

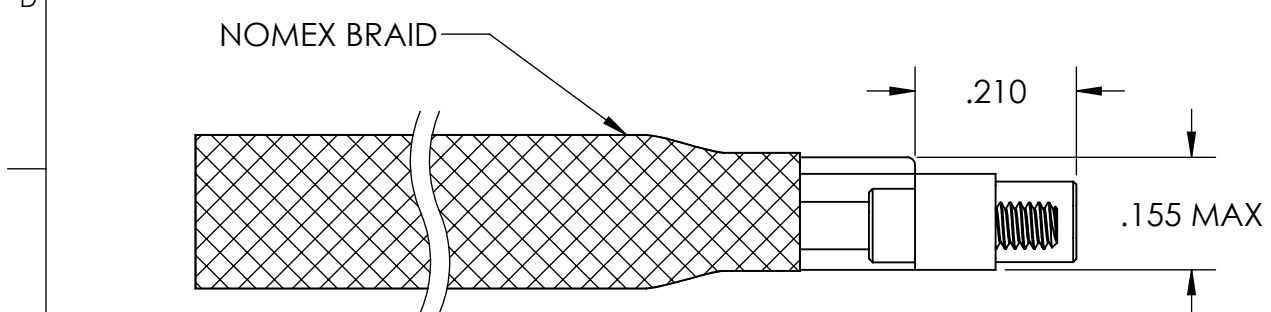
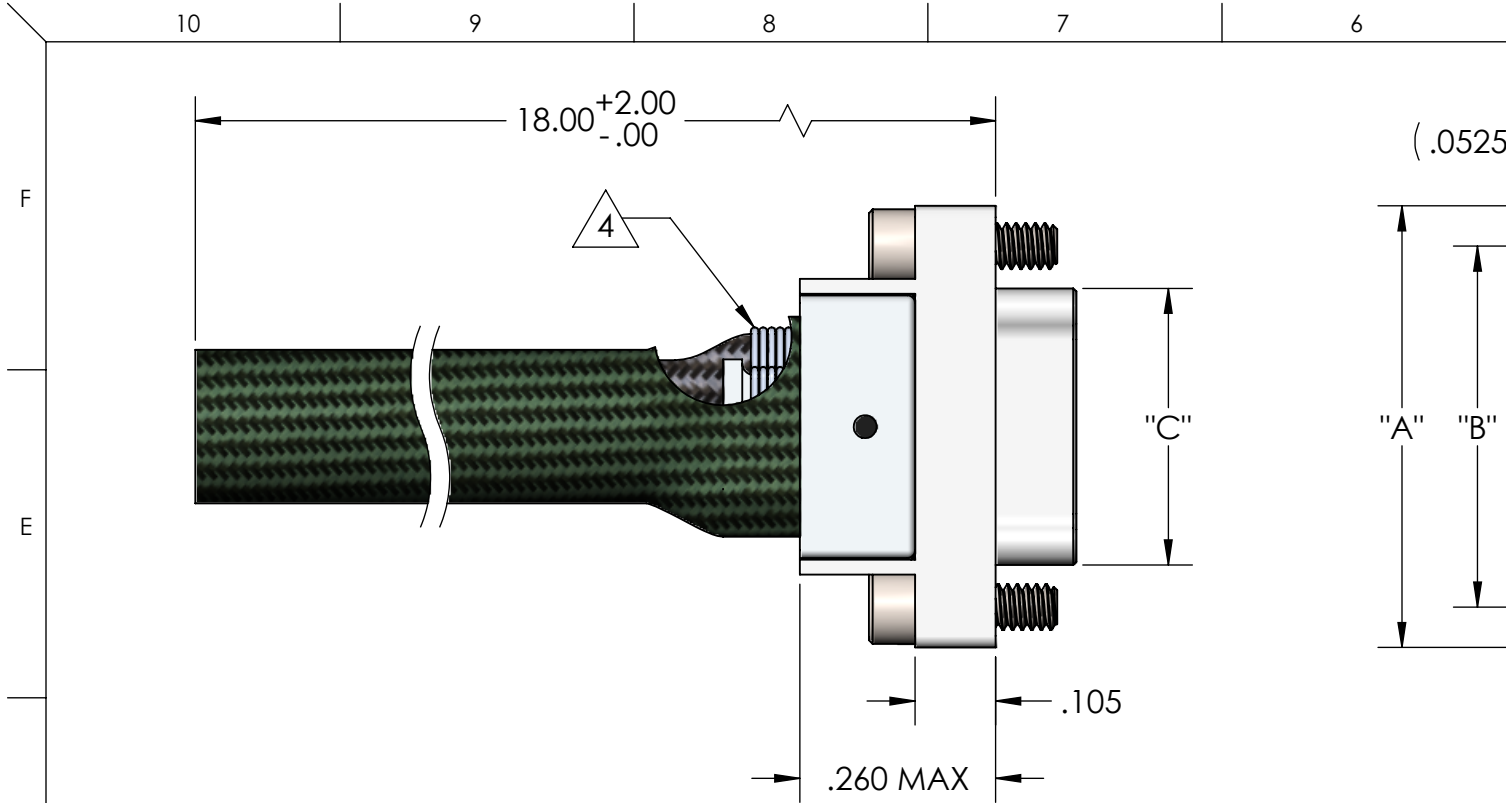
WIRING COLOR CODE  
FOR SIZE 65

SHELL	COLOR	COLOR
1	BLK	ORG
2	BRN	YEL
3	RED	GRN
4	ORG	BLU
5	YEL	VIO
6	GRN	GRY
7	BLU	WHT
8	VIO	BLK
9	GRY	BRN
10	WHT	RED
11	BLK	ORG
12	BRN	YEL
13	RED	GRN
14	ORG	BLU
15	YEL	VIO
16	GRN	GRY
17	BLU	WHT
18	VIO	BLK
19	GRY	BRN
20	WHT	RED
21	BLK	ORG
22	BRN	YEL
23	RED	GRN
24	ORG	BLU
25	YEL	VIO
26	GRN	GRY
27	BLU	WHT
28	VIO	BLK
29	GRY	BRN
30	WHT	RED
31	BLK	ORG
32	BRN	YEL
33	RED	GRN
34		ORG
35		YEL
36		GRN
37		BLU
38		VIO
39		GRY
40		WHT
41		BLK
42		BRN
43		RED
44		ORG
45		YEL
46		GRN
47		BLU
48		VIO
49		GRY
50		WHT
51		BLK
52		BRN
53		RED
54		ORG
55		YEL
56		GRN
57		BLU
58		VIO
59		GRY
60		WHT
61		BLK
62		BRN
63		RED
64		ORG
65		YEL



SIZE 25 SHOWN

PART NO.	SIZE	"A"	"B"	"C"
833319054	9	.375	.270	.160
833329054	15	.450	.345	.235
833339054	21	.525	.420	.310
833349054	25	.575	.470	.360
833359054	31	.650	.545	.435
833369054	37	.725	.620	.510
833379054	51	.900	.795	.685
833389054	65	1.075	.970	.860



6. CONDUCTIVE EPOXY IS TO BE USED TO FILL GAPS BETWEEN BRAID AND SHELL
5. SHIELD IS TO BE COVERED BY A LAYER OF NOMEX BRAID WITH A MINIMUM COVERAGE OF 80%, MECHANICALLY TERMINATED TO CONNECTOR BODY
- $\triangle$  4. WIRE BUNDLE TO BE COVERED WITH SILVER COATED COPPER BRAIDING PER AA59569. BRAIDED SHIELD IS TO PROVIDE A 360° COVERAGE TO SHELL BODY BY WRAPPING BARE WIRE OVER BACKSHELL TABS AS SHOWN AND SOLDERED BACK TO THE BRAIDED SHIELD
3. CONNECTOR TO MEET OR EXCEED MIL-DTL-32139 PERFORMANCE SPECIFICATIONS
- $\triangle$  2. MATERIALS:  
SHELL: ALUMINUM 6061-T6, ELECTROLESS NICKEL PLATED PER AMS 2404  
INSULATOR: LCP (LIQUID CRYSTAL POLYMER) GLCP-30F  
PIN CONTACT: BERYLLIUM COPPER PER ASTM B194, GOLD PLATED PER ASTM B488  
LEADS: 30 AWG, NEMA HP3, TYPE ET, COLOR CODED PER MIL-DTL-681, SYSTEM 1, EXCEPT USING 10 SOLID REPEATING COLORS  
SHIELD: SILVER COATED COPPER BRAID PER AA59569
1. MARKINGS: UMI, DATE CODE, UMI P/N, AND W.O. NUMBER AS SPACE PERMITS OTHERWISE ON BAG OR TAG

NOTES: UNLESS OTHERWISE SPECIFIED

QUALITY SYMBOLS CRITICAL $\triangle$ SPL/ MINOR $\bigcirc$ SPL/ MAJOR $\blacktriangledown$ KEY $\diamond$	<b>UNLESS SPECIFIED:</b> ALL DIMENSIONS IN INCHES	SCALE <b>4:1</b>	DWG SIZE <b>B</b>	$\odot$ THIRD ANGLE PROJECTION	<b>REVISE ON CAD ONLY</b>	
	GENERAL TOLERANCES: 3 PLACE $\pm$ .005 2 PLACE $\pm$ .01 ANGULAR $\pm$ 2°	DRAWN BY & DATE <b>JA 11/25/2020</b>		TITLE <b>NANO-D DUAL ROW CONNECTOR, MALE, SIZE XX, NMLEX-2P02-30F6-18.0 S01-133</b>		
	ALL EXTERNAL SPECIFICATIONS REFERENCED ON THIS DRAWING SHALL BE THE LATEST REVISION IN EFFECT	CHECKED BY & DATE <b>SEE ECN</b>		MATERIAL $\triangle$ 2		
	Uti-Mate CAGE CODE <b>58967</b>	APPROVED BY & DATE <b>SEE ECN</b>		ENG PROJECT # <b>N/A</b>		<b>Uti-Mate</b> Connector Inc.
		CAD FILENAME <b>SD-833349054.slddrw</b>	PART NO. <b>SEE TABLE</b>	DRAWING NO. <b>SD-833349054</b>	SHEET NO. <b>1 OF 1</b>	
	THIS DRAWING CONTAINS INFORMATION THAT IS PROPRIETARY TO ULTI-MATE INCORPORATED AND SHOULD NOT BE USED WITHOUT WRITTEN PERMISSION.				PART REV. <b>B</b>	