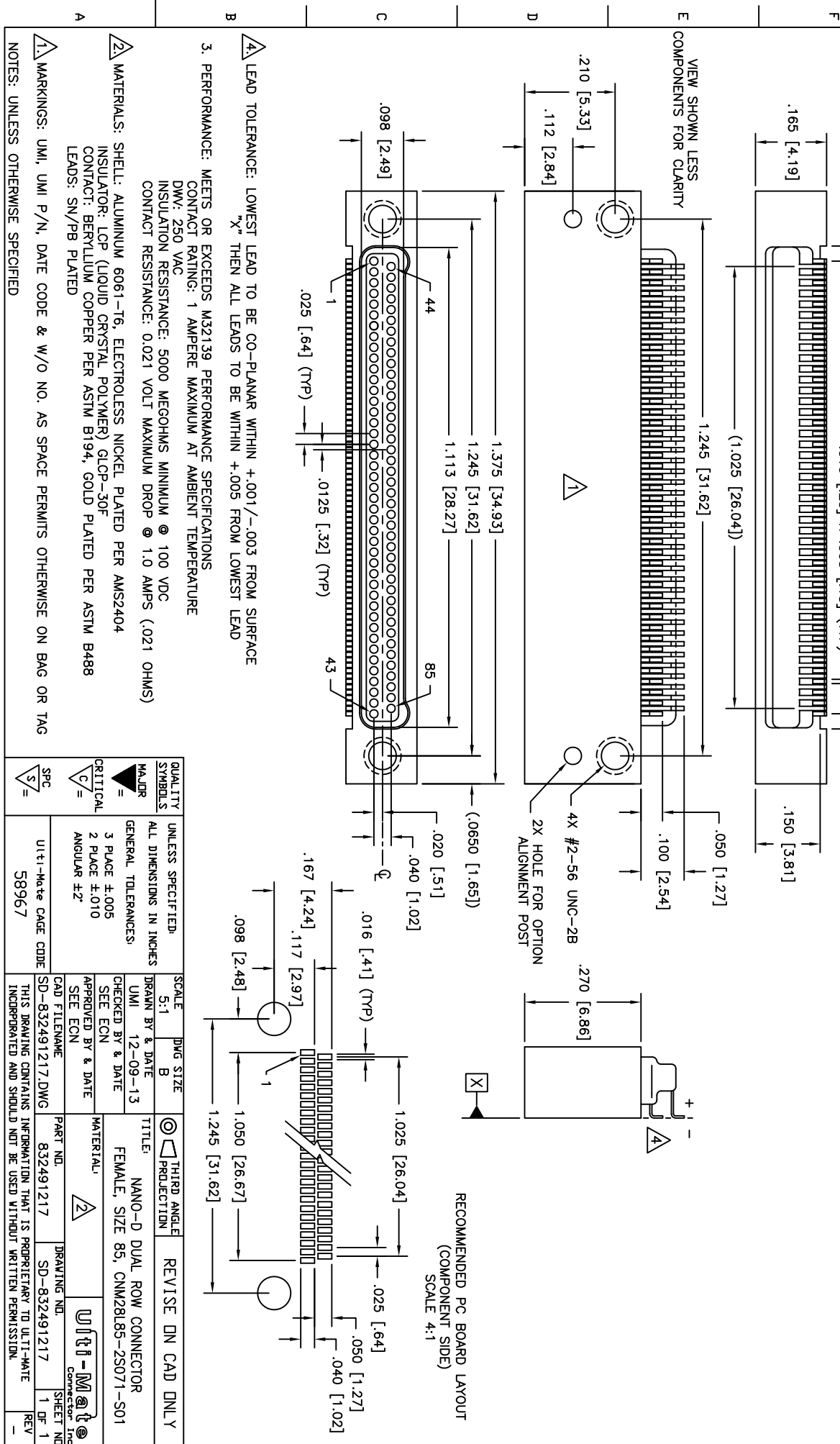


REV	DWG	DATE	ECN NO.	APPD BY	REL BY
-	-	08/07/15	UM6590	T.POMBART	PER
-	A	11/13/16	UM6143	T.POMBART	PER



- 4. LEAD TOLERANCE: LOWEST LEAD TO BE CO-PLANAR WITHIN +.001/- .003 FROM SURFACE "X" THEN ALL LEADS TO BE WITHIN +.005 FROM LOWEST LEAD
- 3. PERFORMANCE: MEETS OR EXCEEDS M32139 PERFORMANCE SPECIFICATIONS
 CONTACT RATING: 1 AMPERE MAXIMUM AT AMBIENT TEMPERATURE
 DMV: 250 VAC
 INSULATION RESISTANCE: 5000 MEGOHMS MINIMUM @ 100 VDC
 CONTACT RESISTANCE: 0.021 VOLT MAXIMUM DROP @ 1.0 AMPS (.021 OHMS)
- 2. MATERIALS: SHELL: ALUMINUM 6061-T6, ELECTROLESS NICKEL PLATED PER AMS2404
 INSULATOR: LCP (LIQUID CRYSTAL POLYMER) GLCP-30F
 CONTACT: BERYLLIUM COPPER PER ASTM B194, GOLD PLATED PER ASTM B488
 LEADS: SN/PB PLATED
- 1. MARKINGS: UMI, UMI P/N, DATE CODE & W/O NO. AS SPACE PERMITS OTHERWISE ON BAG OR TAG

QUALITY SYMBOLS	UNLESS SPECIFIED, ALL DIMENSIONS IN INCHES	SCALE	DWG SIZE	THIRD ANGLE PROJECTION	REVISE ON CAD ONLY
MAJOR =	GENERAL TOLERANCES:	5:1	B		
CRITICAL C =	3 PLACE ±.005	DRAWN BY & DATE	UMI 12-09-13	TITLE	NANO-D DUAL ROW CONNECTOR
S =	2 PLACE ±.010	CHECKED BY & DATE			FEMALE, SIZE 85, CNM28L85-2S071-S01
	ANGULAR ±2°	APPROVED BY & DATE		MATERIAL	
SPC	UT++-MATE CAGE CODE	CAD FILENAME	SD-832491217.DWG	PART NO.	832491217
	58967	THIS DRAWING CONTAINS INFORMATION THAT IS PROPRIETARY TO ULTI-MATE		DRAWING NO.	SD-832491217
		INCORPORATED AND SHOULD NOT BE USED WITHOUT WRITTEN PERMISSION.		SHEET NO.	1 OF 1
				REV	-