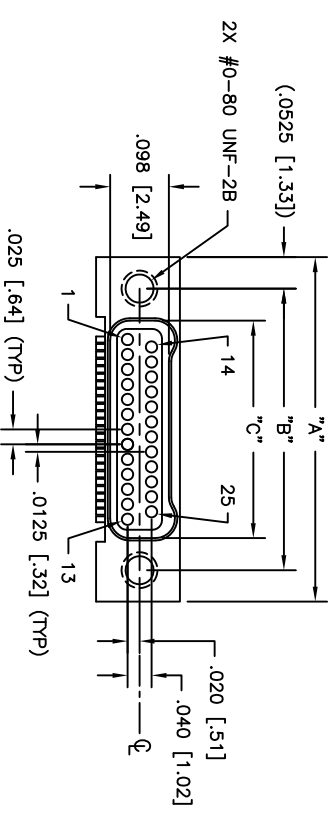
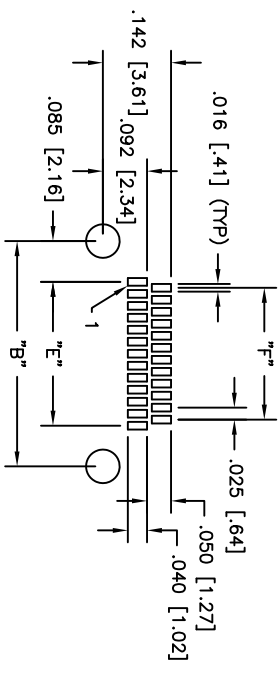
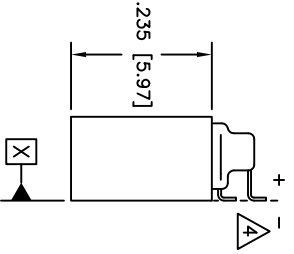
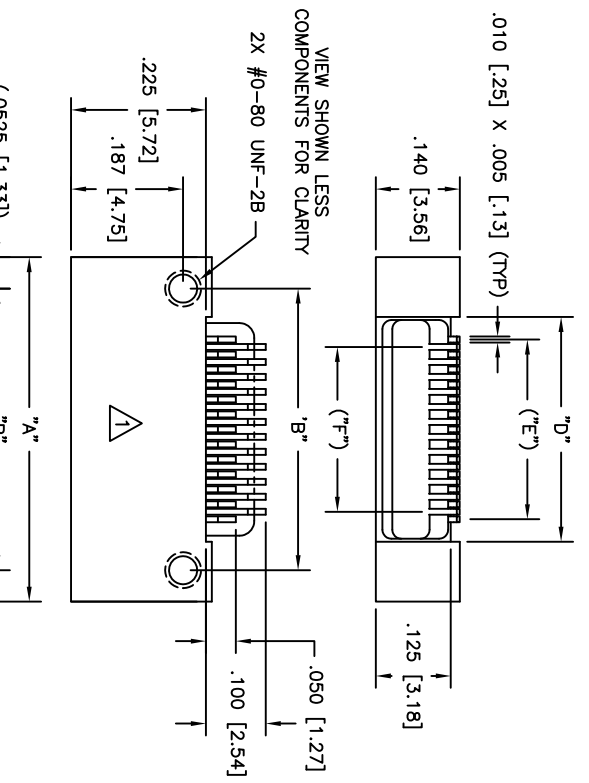


PART DWG	DATE	ECN NO.	APPD BY	REL BY
REV	ISSUE	UIMS875	T.POMBERT	PER
-	02/04/16			



PART NO.	SIZE	"A"	"B"	"C"	"D"	"E"	"F"
832418227	9	.375 [9.52]	.270 [6.86]	.163 [4.06]	.175 [4.44]	.100 [2.54]	.075 [1.90]
832428227	15	.450 [11.43]	.345 [8.76]	.238 [5.97]	.250 [6.35]	.175 [4.44]	.150 [3.81]
832438227	21	.525 [13.33]	.420 [10.67]	.313 [7.87]	.325 [8.25]	.250 [6.35]	.225 [5.71]
832448227	25	.575 [14.60]	.470 [11.94]	.363 [9.14]	.375 [9.52]	.300 [7.62]	.275 [6.98]
832458227	31	.650 [16.51]	.545 [13.84]	.438 [11.05]	.450 [11.43]	.375 [9.52]	.350 [8.89]
832468227	37	.725 [18.41]	.620 [15.75]	.513 [12.95]	.525 [13.33]	.450 [11.43]	.425 [10.79]
832478227	51	.900 [22.86]	.795 [20.19]	.688 [17.40]	.700 [17.78]	.625 [15.87]	.600 [15.24]
832488227	65	1.075 [27.30]	.970 [24.64]	.863 [21.84]	.875 [22.22]	.800 [20.32]	.775 [19.68]

- 4. LEAD TOLERANCE: LOWEST LEAD TO BE CO-PLANAR WITHIN +.001/- .003 FROM SURFACE "X" THEN ALL LEADS TO BE WITHIN +.005 FROM LOWEST LEAD
- 3. PERFORMANCE: MEETS OR EXCEEDS M32139 PERFORMANCE SPECIFICATIONS  
 CONTACT RATING: 1 AMPERE MAXIMUM AT AMBIENT TEMPERATURE  
 DMV: 250 VAC  
 INSULATION RESISTANCE: 5000 MEGOHMS MINIMUM @ 100 VDC  
 CONTACT RESISTANCE: 0.021 VOLT MAXIMUM DROP @ 1.0 AMPS (.021 OHMS)
- 2. MATERIALS: SHELL: AND INSULATOR: LCP (LIQUID CRYSTAL POLYMER) GLCP-30F  
 CONTACT: BERYLLIUM COPPER PER ASTM B194, GOLD PLATED PER ASTM B488  
 LEADS: GOLD LEADS (ROHS COMPLIANT)
- 1. MARKINGS: UMI, UMI P/N, DATE CODE & W/O NO. AS SPACE PERMITS OTHERWISE ON BAG OR TAG

QUALITY SYMBOLS	UNLESS SPECIFIED, ALL DIMENSIONS IN INCHES	SCALE	DWG SIZE	THIRD ANGLE PROJECTION	REVISE ON CAD ONLY
MAJOR =	GENERAL TOLERANCES:	5:1	B		
CRITICAL C =	3 PLACE ±.005	DRAWN BY & DATE	PER	TITLE:	NANO-D DUAL ROW, PLASTIC CONNECTOR
SPC S =	2 PLACE ±.010	CHECKED BY & DATE	SEE ECN	MATERIAL:	FEMALE, SIZE XX, CNP28LXX-2S072
	ANGULAR ±2°	APPROVED BY & DATE	SEE ECN		
		CAD FILENAME	SD-832448227.DWG	PART NO.	SD-832448227
		THIS DRAWING CONTAINS INFORMATION THAT IS PROPRIETARY TO ULTI-MATE	INCORPORATED AND SHOULD NOT BE USED WITHOUT WRITTEN PERMISSION.	DRAWING NO.	SD-832448227
				SHEET NO.	1 OF 1
				REV	-

NOTES: UNLESS OTHERWISE SPECIFIED