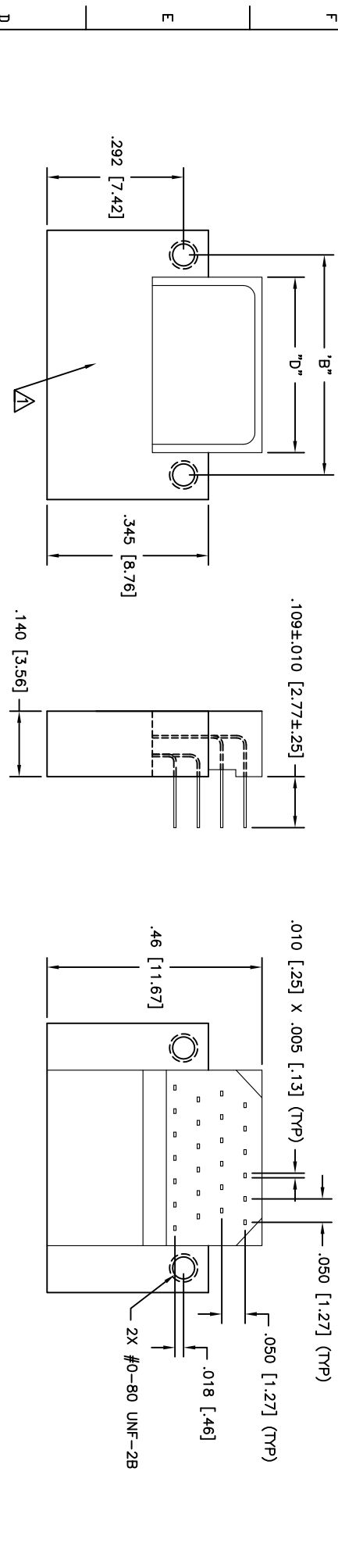


PART DWG	DATE	ECN NO.	APPD BY	REL BY
REV	ISSUE	UMIS816	TPOMBART	PER
-	12/01/15			



PART NO.	SIZE	"A"	"B"	"C"	"D"
832421827	15	.450 [11.43]	.345 [8.76]	.238 [5.97]	.250 [6.35]
832431827	21	.525 [13.33]	.420 [10.67]	.313 [7.87]	.325 [8.25]
832441827	25	.575 [14.60]	.470 [11.94]	.363 [9.14]	.375 [9.52]
832451827	31	.650 [16.51]	.545 [13.84]	.438 [11.05]	.450 [11.43]
832461827	37	.725 [18.41]	.620 [15.75]	.513 [12.95]	.525 [13.33]
832471827	51	.900 [22.86]	.795 [20.19]	.688 [17.40]	.700 [17.78]
832481827	65	1.075 [27.30]	.970 [24.64]	.863 [21.84]	.875 [22.22]

3. PERFORMANCE: MEETS OR EXCEEDS M32139 PERFORMANCE SPECIFICATIONS
 CONTACT RATING: 1 AMPERE MAXIMUM
 DMV: 250 VAC
 INSULATION RESISTANCE: 5000 MEGOHMS MINIMUM @ 100 VDC
 CONTACT RESISTANCE: 0.021 VOLT MAXIMUM DROP @ 1.0 AMPS (.021 OHMS)

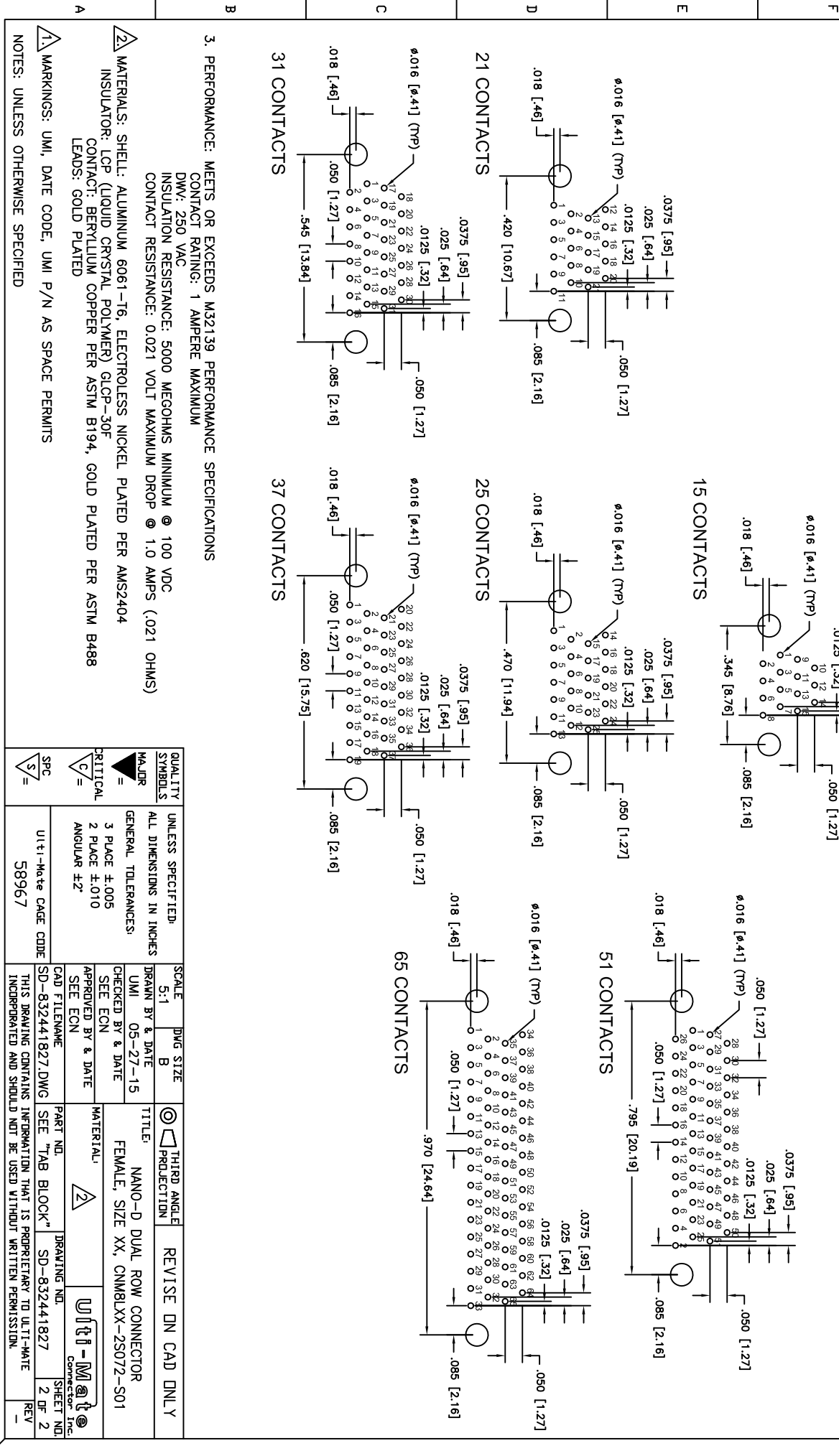
2. MATERIALS: SHELL: ALUMINUM 6061-T6, ELECTROLESS NICKEL PLATED PER AMS2404
 INSULATOR: LCP (LIQUID CRYSTAL POLYMER) GLCP-30F
 CONTACT: BERYLLIUM COPPER PER ASTM B194, GOLD PLATED PER ASTM B488
 LEADS: GOLD PLATED

1. MARKINGS: UMI, DATE CODE, UMI P/N AS SPACE PERMITS

NOTES: UNLESS OTHERWISE SPECIFIED

QUALITY SYMBOLS	UNLESS SPECIFIED, ALL DIMENSIONS IN INCHES	SCALE	DWG SIZE	THIRD ANGLE PROJECTION	REVISE ON CAD ONLY
MAJOR =	GENERAL TOLERANCES:	5:1	B		
CRITICAL =	3 PLACE ±.005	DRAWN BY & DATE			
SPC =	2 PLACE ±.010	UMI 05-27-15			
S =	ANGULAR ±2°	CHECKED BY & DATE			
		SEE ECN			
		APPROVED BY & DATE			
		SEE ECN			
		CAD FILENAME	PART NO.	DRAWING NO.	
		SD-832441827.DWG	SEE "TAB BLOCK"	SD-832441827	
		THIS DRAWING CONTAINS INFORMATION THAT IS PROPRIETARY TO ULTI-MATE			SHEET NO.
		INCORPORATED AND SHOULD NOT BE USED WITHOUT WRITTEN PERMISSION			1 OF 2
					REV
					-

RECOMMENDED PC BOARD LAYOUT
(COMPONENT SIDE)



3. PERFORMANCE: MEETS OR EXCEEDS M32139 PERFORMANCE SPECIFICATIONS
 CONTACT RATING: 1 AMPERE MAXIMUM
 DMV: 250 VAC
 INSULATION RESISTANCE: 5000 MEGOHMS MINIMUM @ 100 VDC
 CONTACT RESISTANCE: 0.021 VOLT MAXIMUM DROP @ 1.0 AMPS (.021 OHMS)

2. MATERIALS: SHELL: ALUMINUM 6061-T6, ELECTROLESS NICKEL PLATED PER AMS2404
 INSULATOR: LCP (LIQUID CRYSTAL POLYMER) GLCP-30F
 CONTACT: BERYLLIUM COPPER PER ASTM B194, GOLD PLATED PER ASTM B488
 LEADS: GOLD PLATED

1. MARKINGS: UMI, DATE CODE, UMI P/N AS SPACE PERMITS
 NOTES: UNLESS OTHERWISE SPECIFIED

PART/DWG	REV	DATE	ECN NO.	APP'D BY	REL BY
		12/01/15	UMI5816	TPOMBART	PER

QUALITY SYMBOLS	UNLESS SPECIFIED, ALL DIMENSIONS IN INCHES	SCALE	DWG SIZE	THIRD ANGLE PROJECTION	REVISE ON CAD ONLY
HAZARD = CRITICAL = SPC = S =	GENERAL TOLERANCES: 3 PLACE ±.005 2 PLACE ±.010 ANGULAR ±2°	5:1	B	⊙	
		DRAWN BY & DATE UMI 05-27-15			
		CHECKED BY & DATE			
		APPROVED BY & DATE			
		SEE ECN			
		CAD FILENAME SD-832441827.DWG			
		SEE "TAB BLOCK"			
		PART NO.			
		DRAWING NO.			
		SD-832441827			
		SHEET NO.			
		2 OF 2			
		REV			

THIS DRAWING CONTAINS INFORMATION THAT IS PROPRIETARY TO ULTI-MATE INCORPORATED AND SHOULD NOT BE USED WITHOUT WRITTEN PERMISSION.