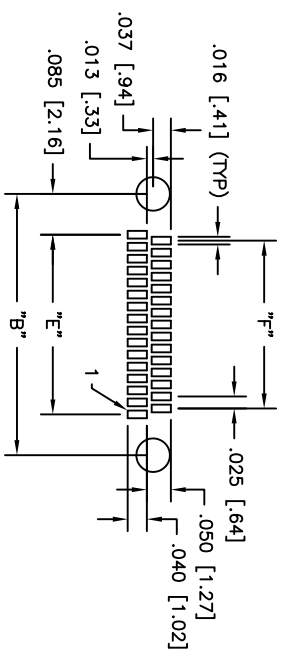
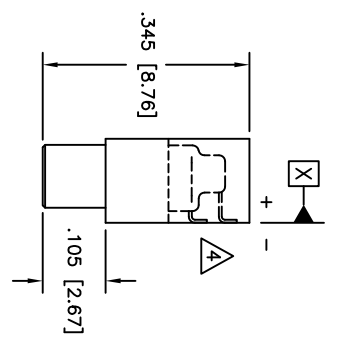
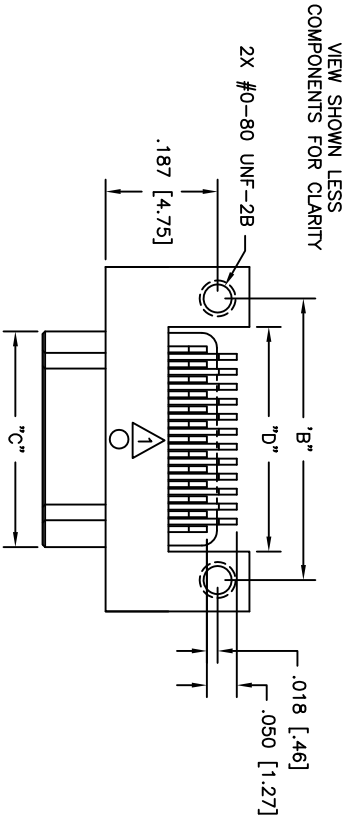
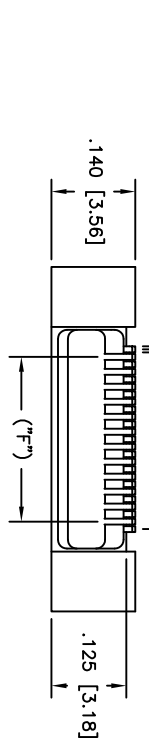
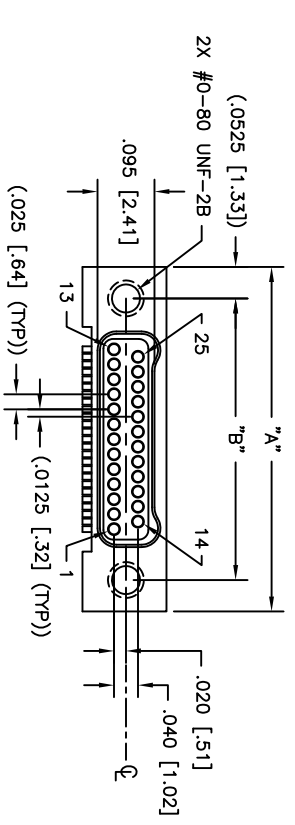


PART DWG REV ISSUE	DATE	ECN NO.	APP'D BY	REL BY
-	08/07/15	UMI5590	T.POMBART	PER
A	11/13/16	UMI6143	T.POMBART	PER



RECOMMENDED PC BOARD LAYOUT
(COMPONENT SIDE)
SCALE 4:1



PART NO.	SIZE	"A"	"B"	"C"	"D"	"E"	"F"
832318217	9	.375 [9.52]	.270 [6.86]	.160 [4.06]	.175 [4.44]	.100 [2.54]	.075 [1.90]
832328217	15	.450 [11.43]	.345 [8.76]	.235 [5.97]	.250 [6.35]	.175 [4.44]	.150 [3.81]
832338217	21	.525 [13.33]	.420 [10.67]	.310 [7.87]	.325 [8.25]	.250 [6.35]	.225 [5.71]
832348217	25	.575 [14.60]	.470 [11.94]	.360 [9.14]	.375 [9.52]	.300 [7.62]	.275 [6.98]
832358217	31	.650 [16.51]	.545 [13.84]	.435 [11.05]	.450 [11.43]	.375 [9.52]	.350 [8.89]
832368217	37	.725 [18.41]	.620 [15.75]	.510 [12.95]	.525 [13.33]	.450 [11.43]	.425 [10.79]
832378217	51	.900 [22.86]	.795 [20.19]	.685 [17.40]	.700 [17.78]	.625 [15.87]	.600 [15.24]
832388217	65	1.075 [27.30]	.970 [24.64]	.860 [21.84]	.875 [22.22]	.800 [20.32]	.775 [19.68]

- LEAD TOLERANCE: LOWEST LEAD TO BE CO-PLANAR WITHIN +.001/- .003 FROM SURFACE "X" THEN ALL LEADS TO BE WITHIN +.005 FROM LOWEST LEAD
- PERFORMANCE: MEETS OR EXCEEDS M52139 PERFORMANCE SPECIFICATIONS
CONTRACT RATING: 1 AMPERE MAXIMUM AT AMBIENT TEMPERATURE
DMV: 250 VAC
INSULATION RESISTANCE: 5000 MEGOHMS MINIMUM @ 100 VDC
CONTACT RESISTANCE: 0.021 VOLT MAXIMUM DROP @ 1.0 AMPS (.021 OHMS)
- MATERIALS: SHELL AND INSULATOR: LCP (LIQUID CRYSTAL POLYMER) GLCP-30F
CONTACT: BERYLLIUM COPPER PER ASTM B194, GOLD PLATED PER ASTM B488
LEADS: Sn/Pb PLATED
- MARKINGS: UMI, UMI P/N, DATE CODE & W/O NO. AS SPACE PERMITS OTHERWISE ON BAG OR TAG

NOTES: UNLESS OTHERWISE SPECIFIED

QUALITY SYMBOLS	UNLESS SPECIFIED: ALL DIMENSIONS IN INCHES
HAZAR CRITICAL	GENERAL TOLERANCES: 3 PLACE ±.005 2 PLACE ±.010 ANGULAR ±.2°
SPC	Uti+ - Mate CAGE CODE 58967
SCALE 5:1	DWG SIZE B
DRAWN BY & DATE UMI 03-09-10	CHECKED BY & DATE
APPROVED BY & DATE	SEE ECN
CAD FILENAME SD-832348217.DWG	PART NO. SD-832348217
TITLE: NANO-D DUAL ROW, PLASTIC CONNECTOR	DRAWING NO. SD-832348217
MATERIAL: MALE, SIZE XX, CNP2RLXX-2P071	SHEET NO. 1 OF 1
THIRD ANGLE PROJECTION	REVISE ON CAD ONLY