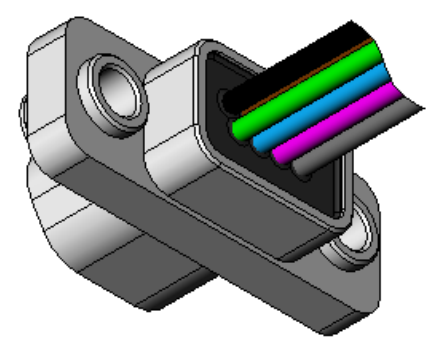
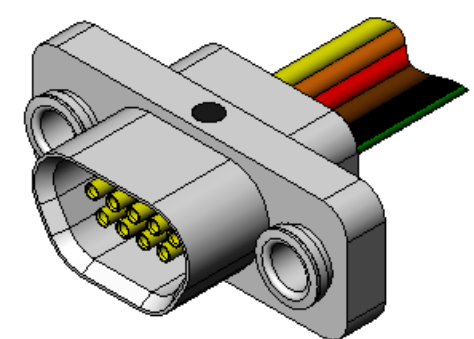
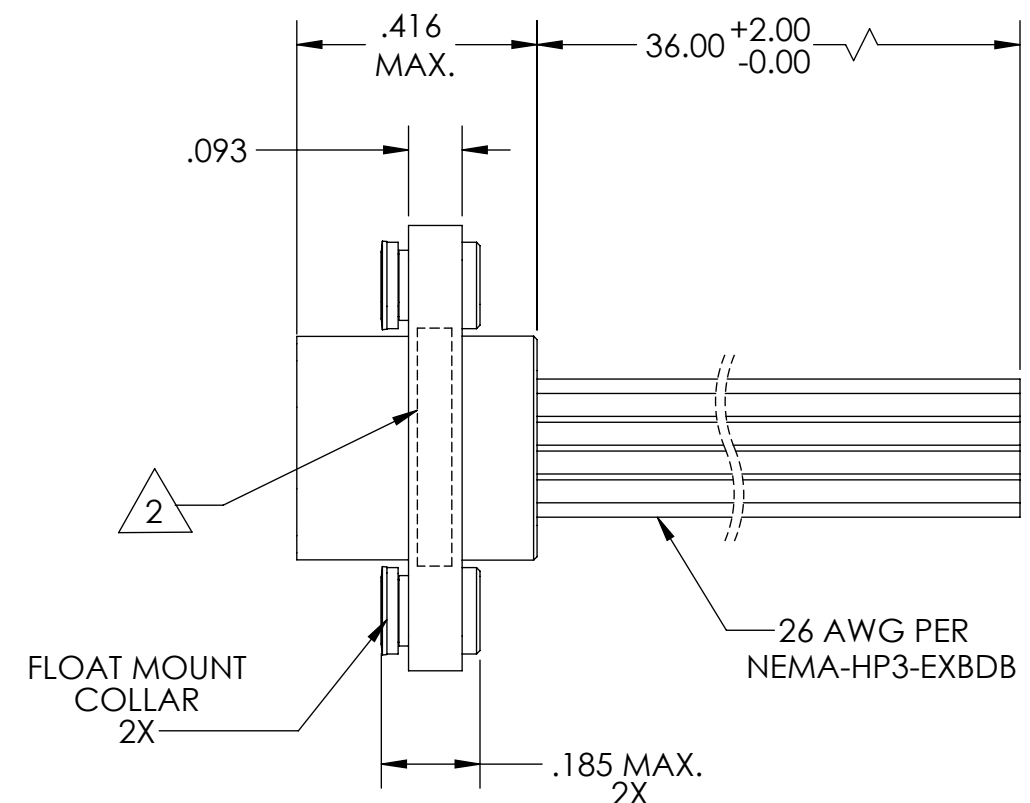
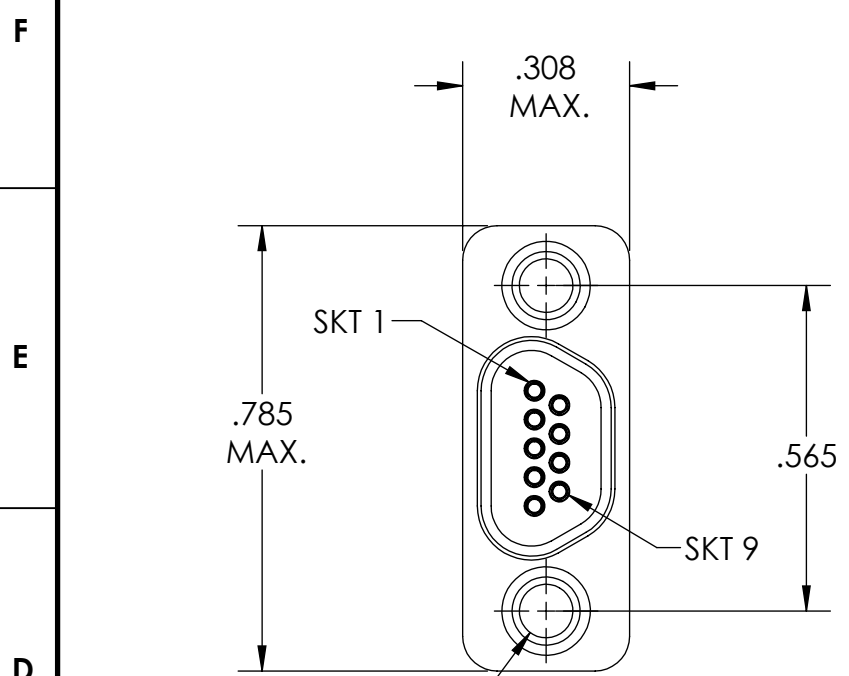


PART REV	DWG ISSUE	DATE	ECN NO.	APPVD BY	REL BY
-	-	6/5/14	UMI5336	DW	DW



1	BLK
2	BRN
3	RED
4	ORG
5	YEL
6	GRN
7	BLU
8	VIO
9	GRY

5 FLOAT MOUNT:
 ALLOWABLE DIAMETRAL FLOAT: .014 ±.004
 ALLOWABLE AXIAL FLOAT: .020 MAX.

4. PERFORMANCE SPECIFICATIONS:
 CURRENT RATING: 3 AMPS MAX. AT AMBIENT TEMPERATURE
 INSULATION RESISTANCE: 5000 MEGOHMS MIN
 DWV: 600 VAC
 TEMPERATURE RATING: 200° C

3 MATERIALS:
 SHELL: 6061-T6 ALUMINUM PER AMS-QQ-A200/8, NICKEL PLATED PER AMS 2404
 INSULATOR: PPS PER MIL-M-24519 GST-40F, COLOR: BLACK
 SOCKET CONTACTS: C21000 BRASS ALLOY PER ASTM B36, GOLD PLATED PER ASTM B488
 WIRE: 26 AWG PER NEMA-HP3-EXBDB, COLOR CODE PER MIL-STD-681
 HARDWARE: PASSIVATED STAINLESS STEEL IAW MIL-DTL-83513/5
 INTERFACIAL SEAL: FLUOROSILICONE PER MIL-R-25988

2 MARKING: "UMI", DATE CODE, UMI PART NUMBER

1. CONNECTOR ASSEMBLY IS IAW MIL-DTL-83513 UNLESS OTHERWISE SPECIFIED.

NOTES: UNLESS OTHERWISE SPECIFIED.

QUALITY SYMBOLS CRITICAL C MAJOR NO SYMBOLS = MINOR DIMENSIONS	UNLESS OTHERWISE SPECIFIED: ALL DIMENSIONS ARE IN INCHES	SCALE 3 : 1	DWG SIZE B	THIRD ANGLE PROJECTION	REVISE ON CAD ONLY	
	GENERAL TOLERANCES: 3 PLACES ±.005 2 PLACES ±.01 ANGULAR ±2°	DRAWN BY & DATE DU 6/5/14		TITLE: MICRO-D CONNECTOR ASSEMBLY, MR09S0-26E5-36.0-S01-F01-HT, HIGH-TEMP		
		CHECKED BY & DATE DW 6/5/14		MATERIAL: 3	ENG PROJECT #: NONE	
		APPROVED BY & DATE DW 6/5/14			DRAWING NO. SD-434211531	
	ULTI-MATE CAGE CODE 58967		CAD FILE NAME SD-434211531.SLDDRW	PART NO. 434211531	SHEET NO. 1 of 1	THIS DRAWING CONTAINS INFORMATION THAT IS PROPRIETARY TO ULTI-MATE INCORPORATED AND SHOULD NOT BE USED WITHOUT WRITTEN PERMISSION.

