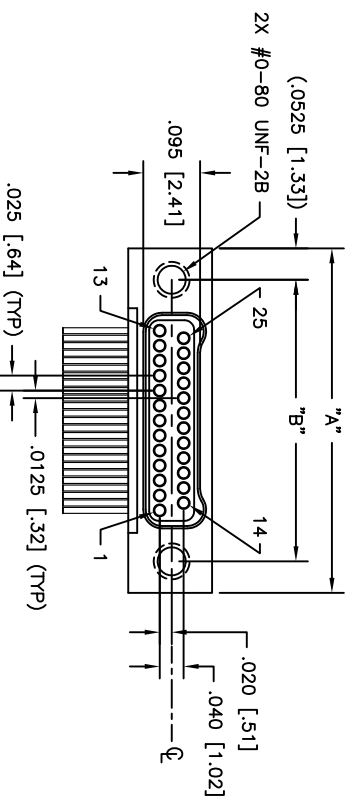
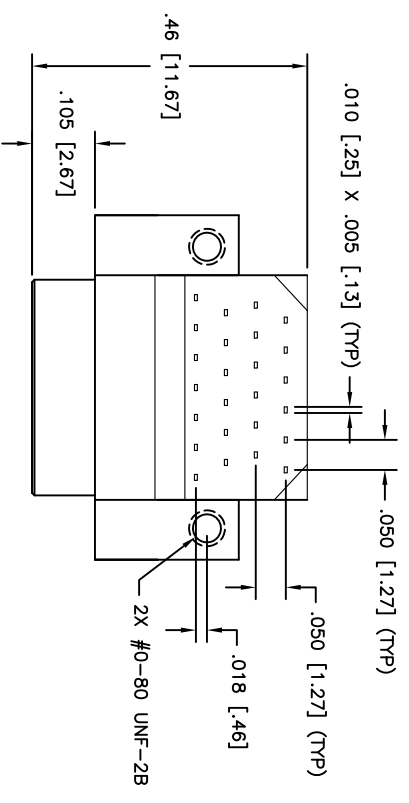
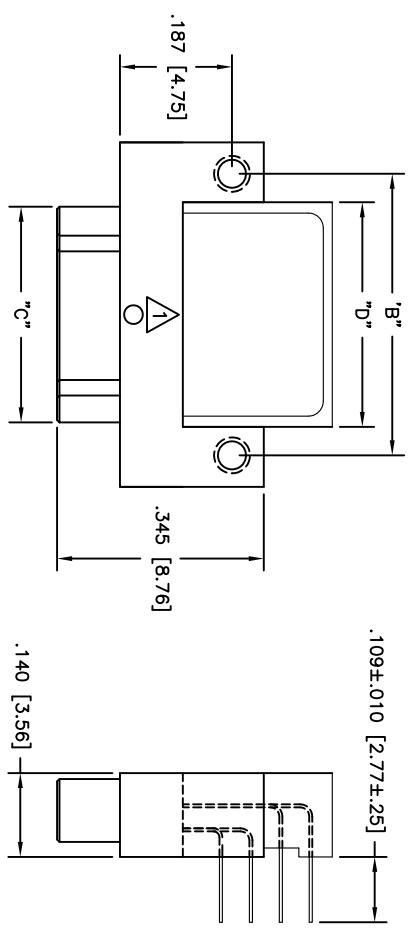


PART/DWG REV/ISSUE		DATE	ECN NO.	APP'D BY	REL BY
A	A	07/08/19	UM17201	T-POWBAART	PER



PART NO.	SIZE	"A"	"B"	"C"	"D"
432321827	15	.450 [11.43]	.345 [8.76]	.235 [5.97]	.250 [6.35]
432331827	21	.525 [13.33]	.420 [10.67]	.310 [7.87]	.325 [8.25]
432341827	25	.575 [14.60]	.470 [11.94]	.360 [9.14]	.375 [9.52]
432351827	31	.650 [16.51]	.545 [13.84]	.435 [11.05]	.450 [11.43]
432361827	37	.725 [18.41]	.620 [15.75]	.510 [12.95]	.525 [13.33]
432371827	51	.900 [22.86]	.795 [20.19]	.685 [17.40]	.700 [17.78]
432381827	65	1.075 [27.30]	.970 [24.64]	.860 [21.84]	.875 [22.22]

A PERFORMANCE: MANUFACTURED TO THE FOLLOWING M32139 PERFORMANCE SPECIFICATIONS
 CONTACT RATING: 1 AMPERE MAXIMUM AT AMBIENT TEMPERATURE
 DWA: 250 VAC
 INSULATION RESISTANCE: 5000 MEGOHMS MINIMUM @ 100 VDC
 CONTACT RESISTANCE: 0.021 VOLTS MAXIMUM AT 1.0 AMPS (.021 OHMS)

B 3. INTERMATEABILITY: INTERFACE DIMENSIONS PER MIL-DTL-32139

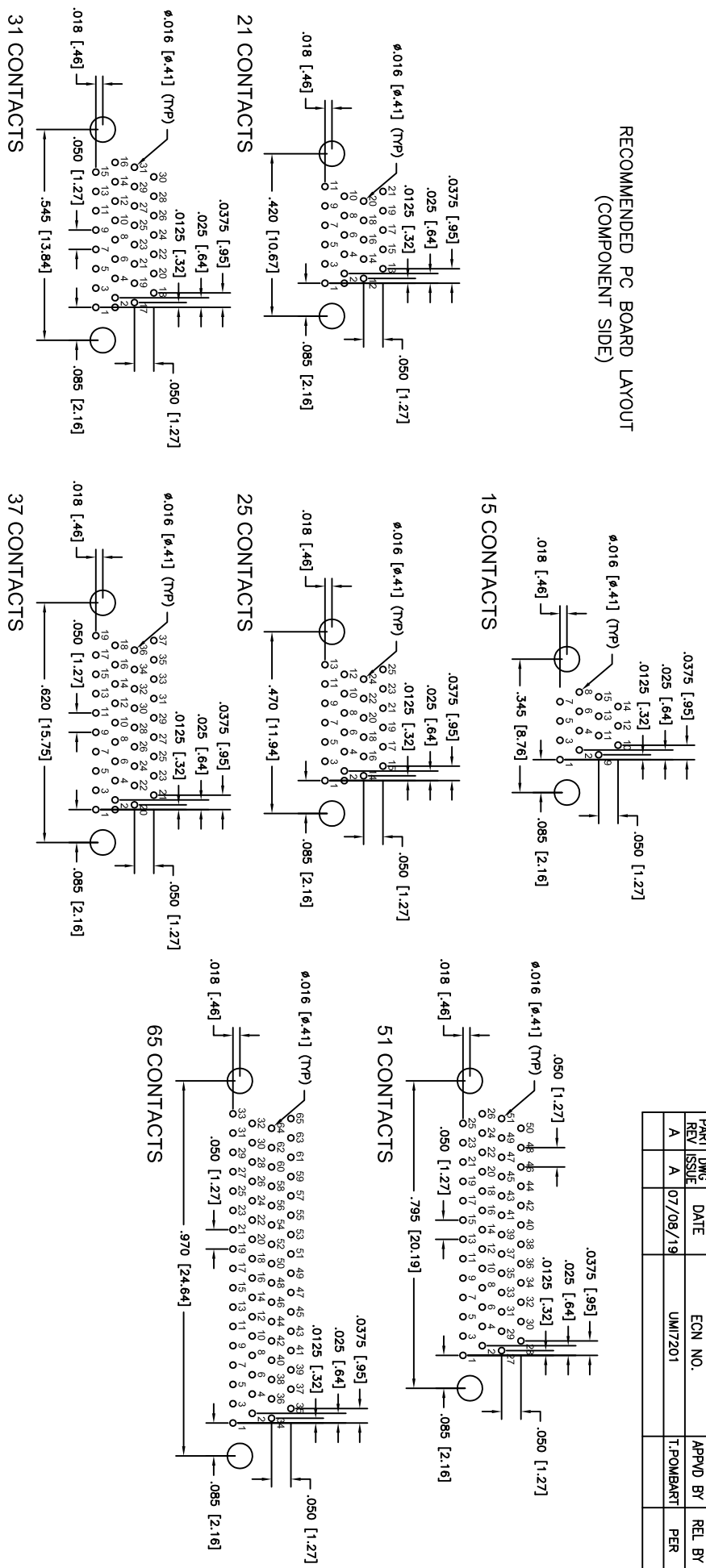
C MATERIALS: SHELL: ALUMINUM 6061-T6, ELECTROLESS NICKEL PLATED PER AMS2404
 INSULATOR: LCP (LIQUID CRYSTAL POLYMER) GLCP-30F
 CONTACT: BERYLLIUM COPPER PER ASTM B194, GOLD PLATED PER ASTM B488
 BACKSHELL: PPS PER MIL-M-24519 GST-40F
 LEADS: GOLD PLATED (ROHS COMPLIANT)
 EPOXY: 200 GELCUS

D MARKINGS: UMI, UMI P/N, DATE CODE & W/O NO. AS SPACE PERMITS OTHERWISE ON BAG OR TAG
 NOTES: UNLESS OTHERWISE SPECIFIED

QUALITY SYMBOLS	UNLESS SPECIFIED, ALL DIMENSIONS IN INCHES	SCALE	DWG SIZE	THIRD ANGLE PROJECTION	REVISE ON CAD ONLY
MAJOR =	GENERAL TOLERANCES:	5:1	B		
CRITICAL =	3 PLACE ±.005	DRAWN BY & DATE			
C =	2 PLACE ±.010	UMI 07-30-12			
S =	ANGULAR ±2°	CHECKED BY & DATE			
SPC		SEE ECN			
UTII-Mate		APPROVED BY & DATE			
58967		SEE ECN			
		CAD FILENAME			
		SD-432341827.DWG			
		PART NO.			
		SEE "TAB BLOCK"			
		SD-432341827			
		DRAWING NO.			
		UMI-Connector Inc.			
		SHEET NO.			
		1 OF 2			
		PART REV			
		A			

THIS DRAWING CONTAINS INFORMATION THAT IS PROPRIETARY TO ULTI-MATE INCORPORATED AND SHOULD NOT BE USED WITHOUT WRITTEN PERMISSION

RECOMMENDED PC BOARD LAYOUT
(COMPONENT SIDE)



PART DWG	DATE	ECN NO.	APPD BY	REL BY
REV ISSUE			T-POWBAKT	PER
A A	07/08/19	UMI7201		

PERFORMANCE: MANUFACTURED TO THE FOLLOWING M32139 PERFORMANCE SPECIFICATIONS
CONTRACT RATING: 1 AMPERE MAXIMUM AT AMBIENT TEMPERATURE
DW: 250 VAC
INSULATION RESISTANCE: 5000 MEGOHMS MINIMUM @ 100 VDC
CONTACT RESISTANCE: 0.021 VOLT MAXIMUM DROP @ 1.0 AMPS (.021 OHMS)

INTERMATEABILITY: INTERFACE DIMENSIONS PER MIL-DTL-32139

MATERIALS: SHELL: ALUMINUM 6061-T6, ELECTROLESS NICKEL PLATED PER AMS2404
 INSULATOR: LCP (LIQUID CRYSTAL POLYMER) GLCP-30F
 CONTACT: BERYLLIUM COPPER PER ASTM B194, GOLD PLATED PER ASTM B488
 BACKSHELL: PPS PER MIL-M-24519 GST-40F
 LEADS: GOLD PLATED (ROHS COMPLIANT)
 EPOXY: 200 CELSUS

MARKINGS: UMI, UMI P/N, DATE CODE & W/O NO. AS SPACE PERMITS OTHERWISE ON BAG OR TAG
NOTES: UNLESS OTHERWISE SPECIFIED

QUALITY SYMBOLS	UNLESS SPECIFIED, ALL DIMENSIONS IN INCHES	SCALE	DWG SIZE	THIRD ANGLE PROJECTION	REVISE ON CAD ONLY
MAJOR =	GENERAL TOLERANCES:	5:1	B		
CRITICAL =	3 PLACE $\pm .005$	DRAWN BY & DATE			
C =	2 PLACE $\pm .010$	UMI 07-30-12			
S =	ANGULAR $\pm 2^\circ$	CHECKED BY & DATE			
SPC		SEE ECN			
UTI		APPROVED BY & DATE			
58967		SEE ECN			
		CAD FILENAME			
		SD-432341827.DWG			
		PART NO.			
		SEE "TAB BLOCK"			
		SD-432341827			
		DRAWING NO.			
		Connector Inc.			
		SHEET NO.			
		2 OF 2			
		PART REV			
		A			