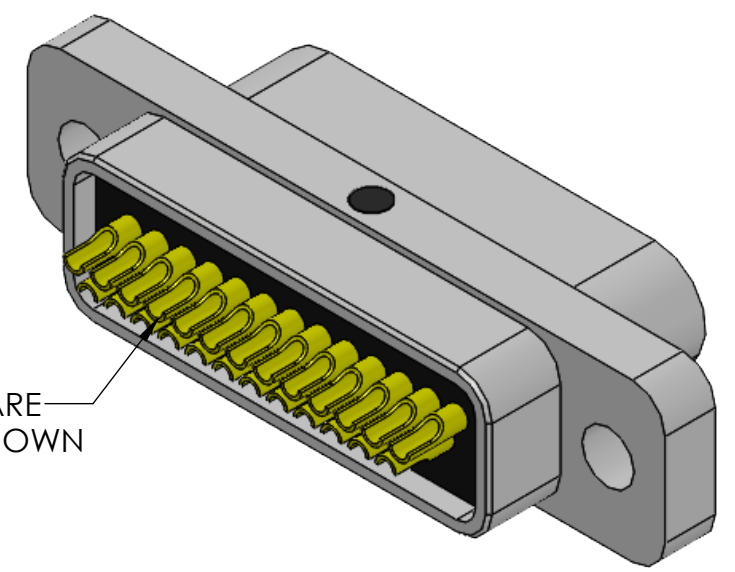
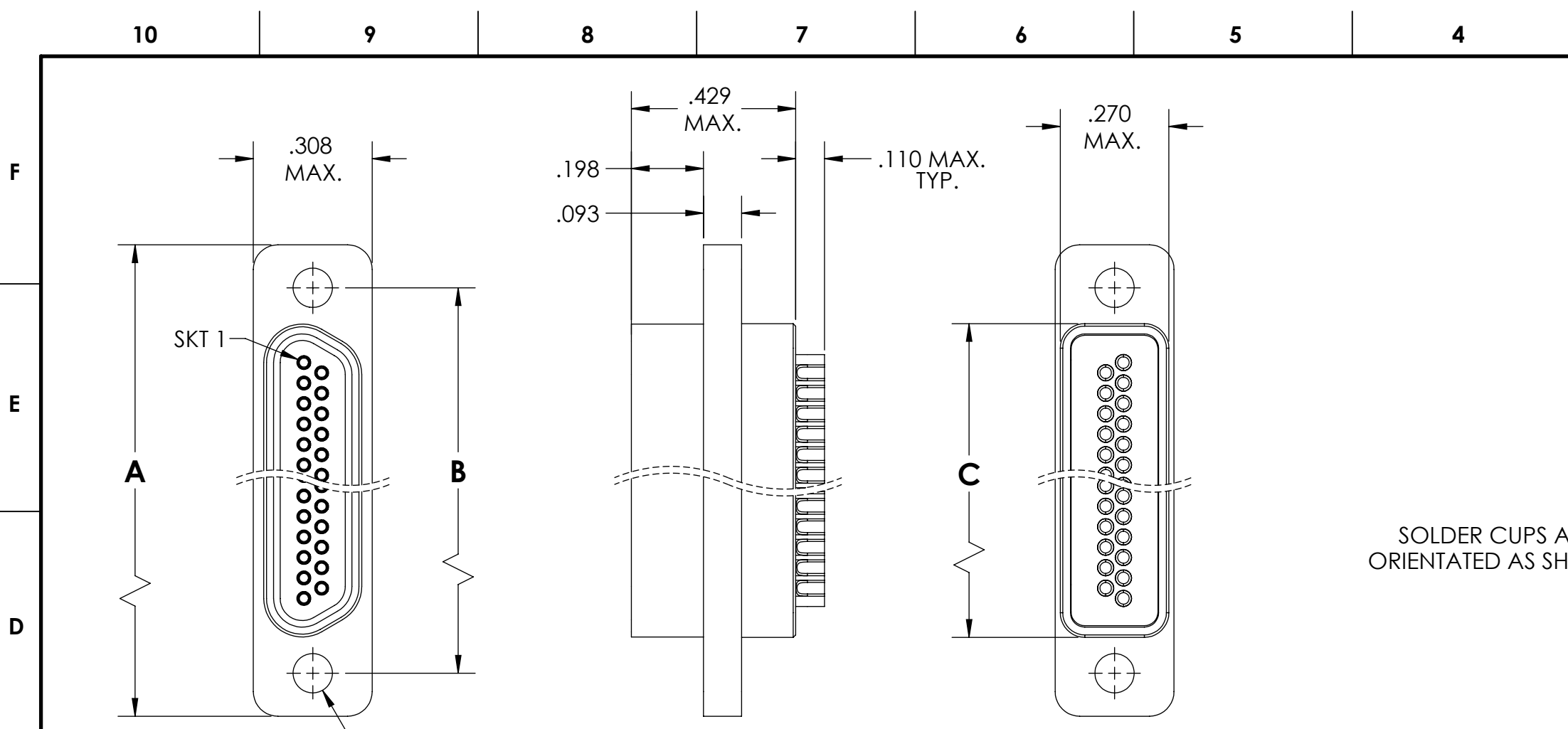
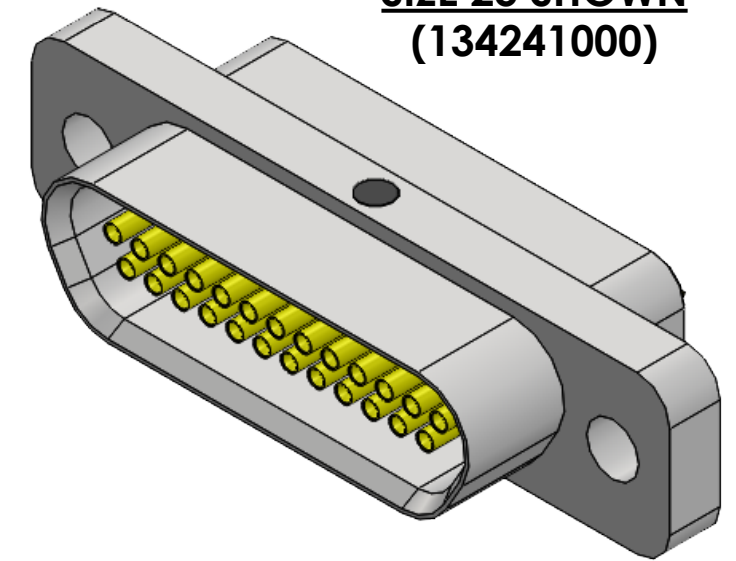


PART REV	DWG ISSUE	DATE	ECN NO.	APPVD BY	REL BY
-	-	5/12/22	UMI8029	DU	DW



SOLDER CUPS ARE ORIENTATED AS SHOWN

**SIZE 25 SHOWN
(134241000)**



PART NUMBER	SIZE	REV	A MAX.	B	C MAX.
134211000	9	-	.785	.565	.400
134221000	15	-	.935	.715	.550
134231000	21	-	1.085	.865	.700
134241000	25	-	1.185	.965	.800
134251000	31	-	1.335	1.115	.950
134261000	37	-	1.485	1.265	1.100

5. CONTACT HEIGHTS ARE TO BE PER QA-STD-101.

4. PERFORMANCE SPECIFICATIONS (AT ROOM TEMPERATURE):
 CURRENT RATING: 3 AMPS MAX.
 INSULATION RESISTANCE: 5000 MEGOHM MIN.
 DWV: 600 VAC
 SERVICE TEMPERATURE RANGE: 4K (-269°C) TO 121°C

3. MATERIALS:
 SHELL: 6061-T6 ALUMINUM PER AMS-Q-Q-A200/8, NICKEL PLATED PER AMS-2404
 INSULATOR: PPS PER MIL-M-24519 GST-40F, COLOR: BLACK
 SOCKET CONTACTS/SOLDER CUPS: C31400 BRASS ALLOY PER ASTM B140, GOLD PLATED PER ASTM B488

2. MARKING: "UMI", DATE CODE, UMI PART NUMBER, UMI WORK ORDER NUMBER

1. CONNECTOR ASSEMBLY IS IAW MIL-DTL-83513 WHERE APPLICABLE.

F
E
D
C
B
A

3

A

NOTES: UNLESS OTHERWISE SPECIFIED.

QUALITY SYMBOLS	UNLESS OTHERWISE SPECIFIED: ALL DIMENSIONS ARE IN INCHES	SCALE 3:1	DWG SIZE B	THIRD ANGLE PROJECTION	REVISE ON CAD ONLY
CRITICAL C=2	GENERAL TOLERANCES: 3 PLACES ±.005 [.127] 2 PLACES ±.01 [.25] ANGULAR ±2° [50°]	DRAWN BY & DATE DU 4/14/22	TITLE: CONNECTOR ASSEMBLY, MRXXT0-S01-LO, SIZES 9 THRU 37, CRYO-TEMP		
MAJOR	ULI-MATE CAGE CODE 58967	CHECKED BY & DATE DW 4/14/22	MATERIAL: 3	ENG PROJECT #: TR712	Ulti-Mate Connector Inc.
NO SYMBOLS = MINOR DIMENSIONS		APPROVED BY & DATE DW 4/14/22	PART NO. SEE TABLE 1	DRAWING NO. SD-134211000	SHEET NO. 1 of 1
		CAD FILE NAME SD-134211000.SLDDRW	THIS DRAWING CONTAINS INFORMATION THAT IS PROPRIETARY TO ULTI-MATE INCORPORATED AND SHOULD NOT BE USED WITHOUT WRITTEN PERMISSION.		