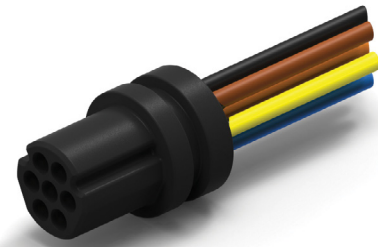


CIRCULAR WIRED CONNECTOR



- Plastic Connector w/Wire Leads
- Operating Temperature -50° C to 200° C
- 7, 12 and 19 Contacts



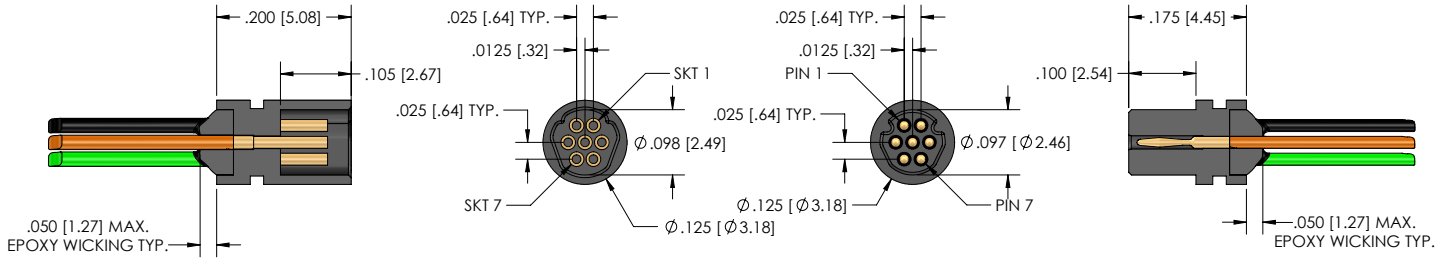
NANO D – PID 122

HOW TO ORDER

* Indicates preferred standard

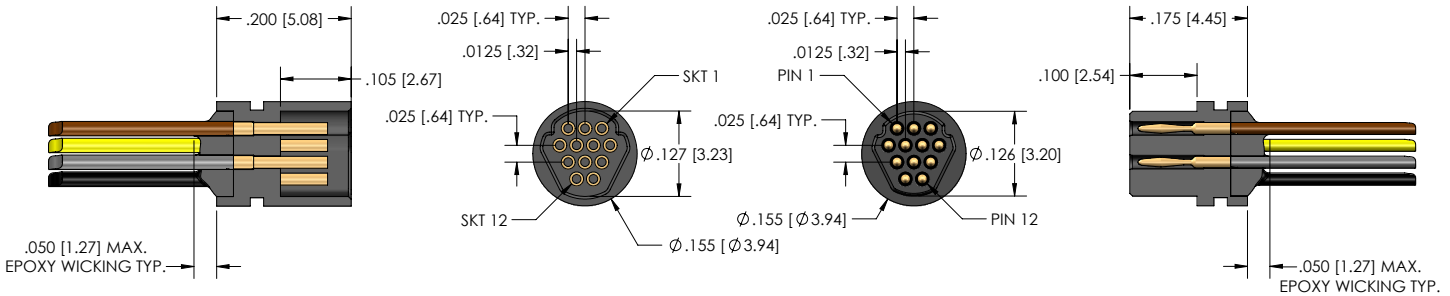
RN	P	O	P	- Ø7	P	- 3Ø	F	6	- 18.Ø	Temp Range
	Type	Mounting Style	Material/Plating	Connector Size	Contact Gender	Wire Gauge	Wire Type	Color Code	Length	
RN= Round Nano	P=Plastic (No Shell)	O=Inline	P=Plastic	Ø7	P=Male/Pin (Plug Side)	3Ø*	*F=Stranded, w/Teflon insulation, per NEMA HP3-ET	1=White	*18.Ø	*Blank = 125C
				12		32	Y=Stranded w/Tefzel insulation, per SAE AS22759/33	*6 = 10 solid colors, repeating	*36.Ø	HT = 200°C
				19	S=Female/Socket (Receptacle Side)	34	A=Stranded, per DSCC Ø4Ø47-3ØA (White, 3Ø AWG only)			
										

DIMENSIONS



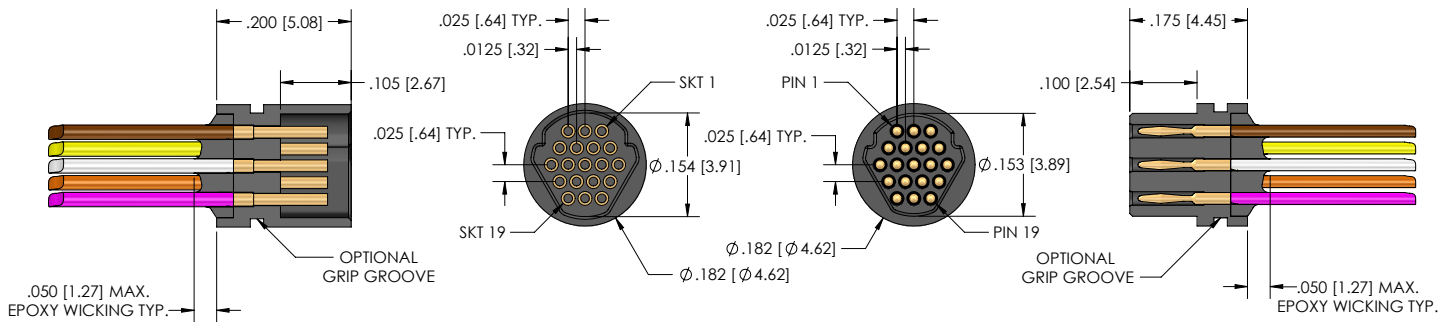
7 POSITION RECEPTACLE

7 POSITION PLUG



12 POSITION RECEPTACLE

12 POSITION PLUG



19 POSITION RECEPTACLE

19 POSITION PLUG

PERFORMANCE DATA

133-E	ELECTRICAL
CONTACT RESISTANCE:	0.033 mΩ max.@ 1.0 A
CURRENT RATING (SIGNAL CONTACTS):	1.0 A max.
DIELECTRIC WITHSTANDING VOLTAGE:	250 VAC at sea level , 100 VAC at 70,000 ft.
INSULATION RESISTANCE:	5,000 MΩ min.

123-M	MECHANICAL
CONTACT ENGAGING FORCE:	5 oz max. (Contact average is 2 oz.)
CONTACT SEPARATING FORCE:	0.4 oz. min.
CONNECTOR MATING FORCE:	7 oz. x number of contacts max.
CONNECTOR UNMATING FORCE:	7 oz. x number of contacts max.
VIBRATION:	No damage or interruption detected (one microsecond sensitivity) EIA-364-28 Condition IV
SHOCK:	No damage or interruption detected (one microsecond sensitivity) EIA-364-28 Condition IV
DURABILITY:	No mechanical or electrical defects after 200 matings.
SALT SPRAY:	No exposure of base metal or loss of performance after 96 hours for both Nickel and Cadmium plating

122-M&F	MATERIALS AND FINISHES
Pin Contacts	BeCu alloy strip per ASTM–B–194
Socket Contacts	Brass alloy C260 per ASTM B135
Contact Plating	Gold plate per ASTM B488, or SAE AMS 2422
Metal Shells	Aluminum Alloy Per SAE-AMS-QQ-A-200/8, TYPE 6061-T6 WITH ELECTROLESS NICKEL PLATING PER SAE-AMS2404, CLASS 3 OR 4 Aluminum Alloy Per SAE-AMS-QQ-A-200/8, TYPE 6061-T6 WITH CADMIUM PLATING SAE-AMS-QQ-P-416, TYPE II, CLASS 1 Aluminum Alloy Per SAE-AMS-QQ-A-200/8, TYPE 6061-T6 WITH BLACK ANODIZE PLATING PER MIL-A-8625, TYPE III, CLASS 2 Stainless steel per ASTM A582
Molded Insulators into Metal Housing	LCP (Liquid Crystal Polymer) GLCP-30F or PPS per MIL-M-24519 GST-40F
Hardware	Corrosion resistant steel per ASTM A 582/A582 or ASTM A 581/A581M, Passivated per SAE AMS–2700