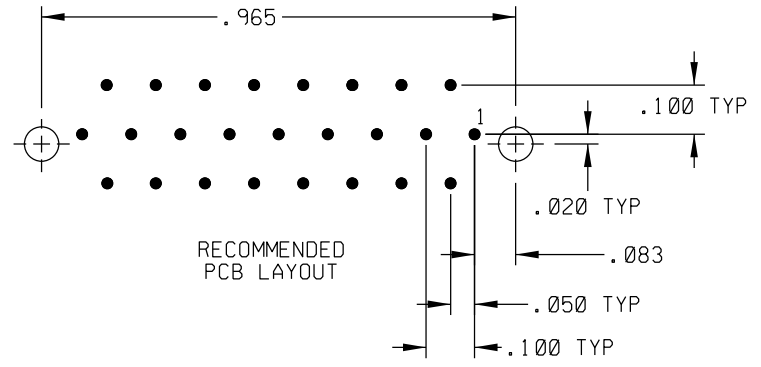
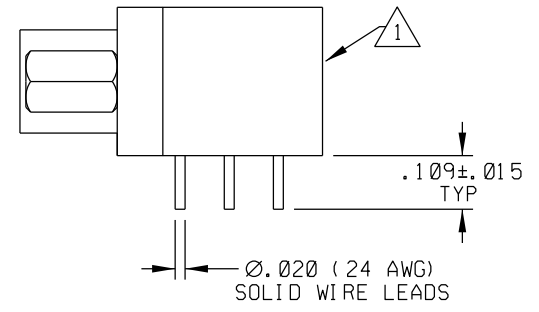
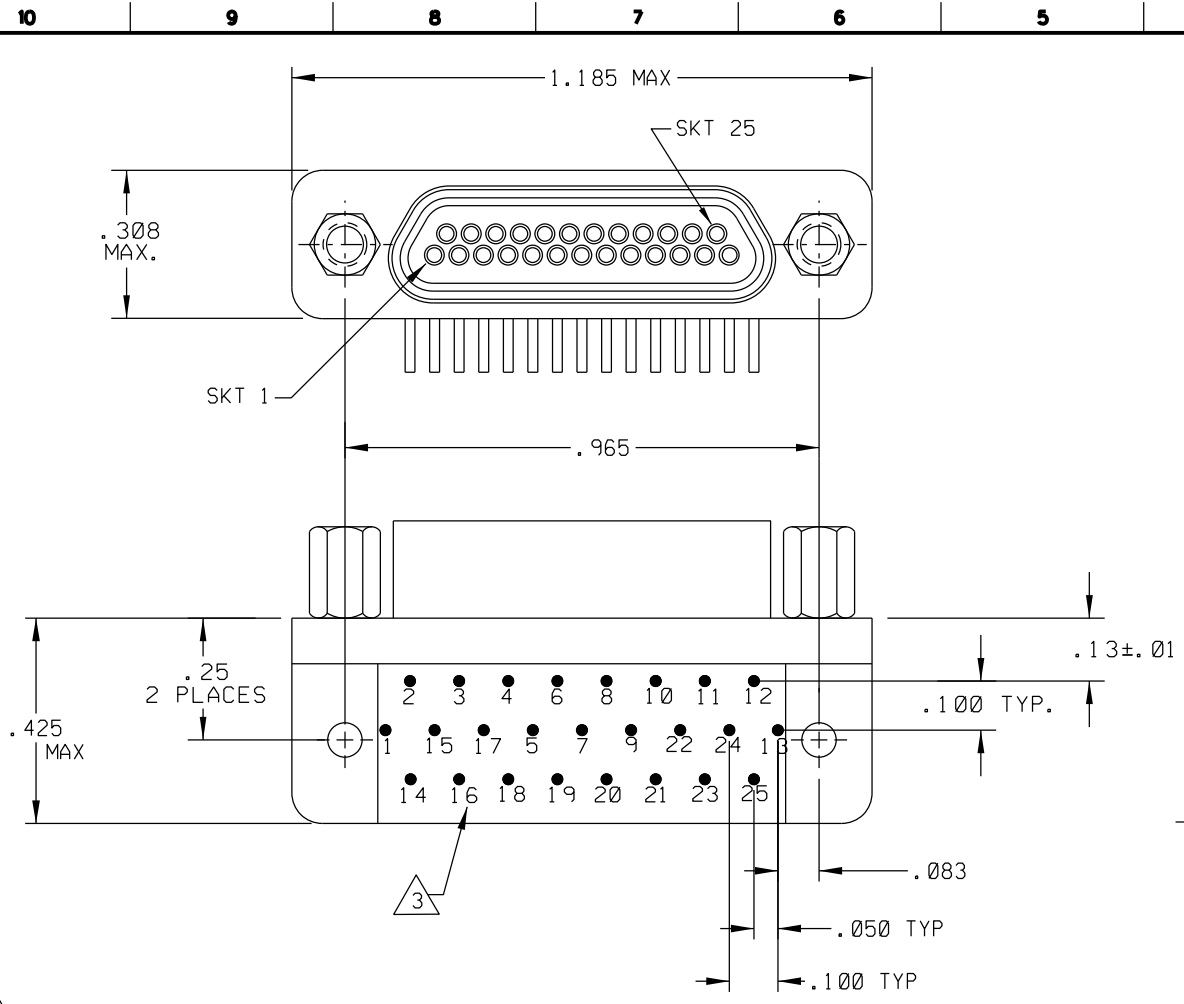


SD-836240117

PART REV	DWG ISSUE	DATE	ECN NO.	APPVD BY	REL BY
-	-	10-13-15	UMI 5768	DW	DW



- 3 NUMBERS ON BACKSHELL ARE SHOWN FOR REFERENCE ONLY AND DO NOT APPEAR ON PART
  - 2 MATERIALS:  
 SHELL: 6061-T6 ALUMINUM PER QQ-A200/8 CADMIUM PLATED PER QQ-P-416  
 INSULATOR AND BACKSHELL: PPS PER MIL-M-24519 GST-40F  
 SOCKET CONTACTS: C21000 COPPER ALLOY PER ASTM B36 GOLD PLATED PER ASTM B488  
 24 AWG SOLID WIRE LEADS: TIN PLATED COPPER ALLOY  
 INTERFACIAL SEAL: FLOUROSILICONE  
 HARDWARE: PASSIVATED STAINLESS STEEL IAW MIL-DTL-83513/5
  - 1 MARKING: UMI, DATE CODE, UMI P/N.
- NOTES: UNLESS OTHERWISE SPECIFIED

QUALITY SYMBOLS CRITICAL MAJOR NO SYMBOL = MINOR DIMENSION	UNLESS SPECIFIED: ALL DIMENSIONS IN INCHES GENERAL TOLERANCES: 3 PLACE ±.005 2 PLACE ±.01 ANGULAR ±2°	SCALE 4:1	DWG SIZE B	THIRD ANGLE PROJECTION	REVISE ON CAD ONLY
	ALL EXTERNAL SPECIFICATIONS REFERENCED ON THIS DRAWING SHALL BE TO THE LATEST REVISION IN EFFECT Ulti-Mate CAGE CODE <b>58967</b>	DRAWN BY & DATE DW 10-13-15 CHECKED BY & DATE SEE ECN APPROVED BY & DATE SEE ECN	TITLE: RECEPTACLE, CIRCUIT SERIES, SIZE 25, STYLE 1 (.100 X .100), CMIR25S07		MATERIAL: 2 <b>Ulti-Mate Connector Inc.</b>
		CAD FILENAME SD-836240117.DGN	PART NO. 836240117	DRAWING NO. SD-836240117	SHEET NO. 1 OF 1
		THIS DRAWING CONTAINS INFORMATION THAT IS PROPRIETARY TO ULTI-MATE INCORPORATED AND SHOULD NOT BE USED WITHOUT WRITTEN PERMISSION.			PART REV -